

ABI4 Rabbit pAb

Catalog No.: A22239

Basic Information

Observed MW

36kDa

Calculated MW

36kDa

Category

Primary antibody

Applications

WB, ELISA

Cross-Reactivity

Arabidopsis thaliana

Background

Encodes a member of the DREB subfamily A-3 of ERF/AP2 transcription factor family (ABI4). The protein contains one AP2 domain. There is only one member in this family. Involved in abscisic acid (ABA) signal transduction, ABA-mediated glucose response, and hexokinase-dependent sugar responses. Acts downstream of GUN1 in retrograde signaling. Expressed most abundantly in developing siliques and to a lesser degree in seedlings.

Recommended Dilutions

WB 1:1000 - 1:5000

ELISA Recommended starting concentration is 1 µg/mL. Please optimize the concentration based on your specific assay requirements.

Immunogen Information

Gene ID

818614

Swiss Prot

A0MES8

Immunogen

Synthetic peptide. This information is considered to be commercially sensitive.

Synonyms

ABA INSENSITIVE 4; ABSCISIC ACID-INSENSITIVE PROTEIN 4; ATABI4; GIN6; GLUCOSE INSENSITIVE 6; IMPAIRED SUCROSE INDUCTION 3; ISI3; SALOBRENO 5; SAN5; SIS5; SUCROSE UNCOUPLED 6; SUGAR-INSENSITIVE 5; SUN6; T7M7.16; ABI4

Contact

☎ | 400-999-6126

✉ | cn.market@abclonal.com.cn

🌐 | www.abclonal.com.cn

Product Information

Source

Rabbit

Isotype

IgG

Purification

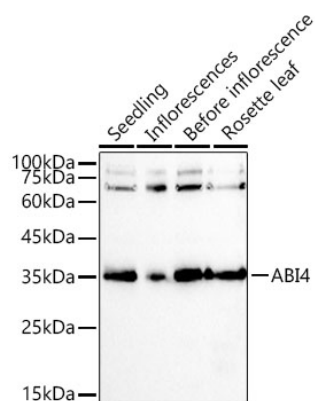
Affinity purification

Storage

Store at -20°C. Avoid freeze / thaw cycles.

Buffer: PBS containing 50% glycerol, preserved with proclin300 or sodium azide (as specified on the Certificate of Analysis), pH 7.3.

Validation Data



Western blot analysis of various tissues from *Arabidopsis thaliana*, using ABI4 Rabbit pAb (A22239) at 1:1000 dilution.

Secondary antibody: HRP-conjugated Goat anti-Rabbit IgG (H+L) (AS014) at 1:10000 dilution.

Lysates / proteins: 25 µg per lane.

Blocking buffer: 3 % nonfat dry milk in TBST.

Detection: ECL Basic Kit (RM00020).

Exposure time: 30s.