

DUSP1/MKP1 Rabbit mAb

Catalog No.: A22201 **Recombinant**

Basic Information

Observed MW

39kDa

Calculated MW

39kDa

Category

Primary antibody

Applications

ELISA, WB

Cross-Reactivity

Human

CloneNo number

ARC56245

Background

The protein encoded by this gene is a phosphatase with dual specificity for tyrosine and threonine. The encoded protein can dephosphorylate MAP kinase MAPK1/ERK2, which results in its involvement in several cellular processes. This protein appears to play an important role in the human cellular response to environmental stress as well as in the negative regulation of cellular proliferation. Finally, the encoded protein can make some solid tumors resistant to both chemotherapy and radiotherapy, making it a target for cancer therapy.

Recommended Dilutions

WB 1:1000 - 1:5000

Immunogen Information

Gene ID

1843

Swiss Prot

P28562

Immunogen

A synthetic peptide corresponding to a sequence within amino acids 100-200 of human DUSP1/MKP1 (NP_004408.1).

Synonyms

HVH1; MKP1; CL100; MKP-1; PTPN10; DUSP1/MKP1

Contact

 | 400-999-6126

 | cn.market@abclonal.com.cn

 | www.abclonal.com.cn

Product Information

Source

Rabbit

Isotype

IgG

Purification

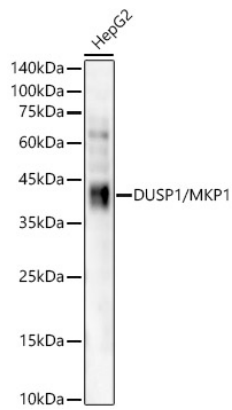
Affinity purification

Storage

Store at -20°C. Avoid freeze / thaw cycles.

Buffer: PBS with 0.05% proclin300, 0.05% BSA, 50% glycerol, pH7.3.

Validation Data



Western blot analysis of HepG2, using DUSP1/MKP1 antibody (A22201) at 1:2000 dilution.
Secondary antibody: HRP Goat Anti-Rabbit IgG (H+L) (AS014) at 1:10000 dilution.
Lysates/proteins: 25µg per lane.
Blocking buffer: 3% nonfat dry milk in TBST.
Detection: ECL Enhanced Kit (RM00021).
Exposure time: 180s.