

# IL2 Rabbit mAb

Catalog No.: A22200 **Recombinant** **1 Publications**

## Basic Information

### Observed MW

22kDa (Recombinant Protein)/19 kDa

### Calculated MW

19kDa

### Category

Primary antibody

### Applications

WB,ELISA

### Cross-Reactivity

Mouse

### CloneNo number

ARC55614

## Background

Enables cytokine activity and interleukin-2 receptor binding activity. Involved in negative regulation of T-helper 17 cell differentiation. Acts upstream of or within several processes, including extrinsic apoptotic signaling pathway in absence of ligand; positive regulation of macromolecule metabolic process; and regulation of lymphocyte activation. Located in extracellular space. Is expressed in liver; omental bursa; thymus; and thymus primordium. Used to study Sjogren's syndrome and inflammatory bowel disease. Human ortholog(s) of this gene implicated in several diseases, including Takayasu's arteritis; auditory system disease (multiple); autoimmune disease (multiple); carcinoma (multiple); and neurodegenerative disease (multiple). Orthologous to human IL2 (interleukin 2).

## Recommended Dilutions

**WB** 1:1000 - 1:5000

**ELISA** Recommended starting concentration is 1 µg/mL. Please optimize the concentration based on your specific assay requirements.

## Immunogen Information

### Gene ID

16183

### Swiss Prot

P04351

### Immunogen

Recombinant protein (or fragment). This information is considered to be commercially sensitive.

### Synonyms

IL-2; IL2

## Contact

☎ | 400-999-6126

✉ | [cn.market@abclonal.com.cn](mailto:cn.market@abclonal.com.cn)

🌐 | [www.abclonal.com.cn](http://www.abclonal.com.cn)

## Product Information

### Source

Rabbit

### Isotype

IgG

### Purification

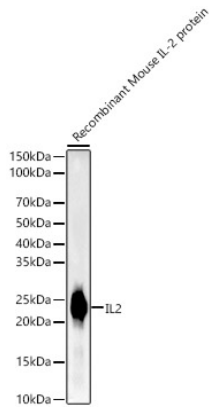
Affinity purification

### Storage

Store at -20°C. Avoid freeze / thaw cycles.

Buffer: PBS with 0.09% Sodium azide, 0.05% BSA, 50% glycerol, pH7.3.

## Validation Data



Western blot analysis of Recombinant Mouse IL-2 Protein (RP01384), using IL2 Rabbit mAb (A22200) at 1:2000 dilution.

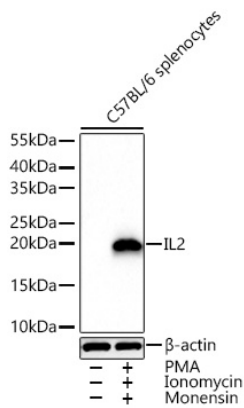
Secondary antibody: HRP-conjugated Goat anti-Rabbit IgG (H+L) (AS014) at 1:10000 dilution.

Lysates/proteins: 10ng per lane.

Blocking buffer: 3% nonfat dry milk in TBST.

Detection: ECL Basic Kit (RM00020).

Exposure time: 0.2s.



Western blot analysis of lysates from C57BL/6 splenocytes using IL2 Rabbit mAb (A22200) at 1:1000 dilution incubated overnight at 4°C. C57BL/6 splenocytes treated with PMA (50 ng/mL), ionomycin (1µg/mL) at 37°C for 1 hour and monensin (2 µM) at 37°C for 4 hours.

Secondary antibody: HRP-conjugated Goat anti-Rabbit IgG (H+L) (AS014) at 1:10000 dilution.

Lysates/proteins: 30 µg per lane.

Blocking buffer: 3% nonfat dry milk in TBST.

Detection: ECL Basic Kit (RM00020).

Exposure time: 20 s.