

c-Abl Rabbit mAb

Catalog No.: A22199 **Recombinant**

Basic Information

Observed MW

Refer to figures

Calculated MW

123kDa

Category

Primary antibody

Applications

ELISA, IHC-P

Cross-Reactivity

Mouse, Rat

CloneNo number

ARC55102

Background

This gene is a protooncogene that encodes a protein tyrosine kinase involved in a variety of cellular processes, including cell division, adhesion, differentiation, and response to stress. The activity of the protein is negatively regulated by its SH3 domain, whereby deletion of the region encoding this domain results in an oncogene. The ubiquitously expressed protein has DNA-binding activity that is regulated by CDC2-mediated phosphorylation, suggesting a cell cycle function. This gene has been found fused to a variety of translocation partner genes in various leukemias, most notably the t(9;22) translocation that results in a fusion with the 5' end of the breakpoint cluster region gene (BCR; MIM:151410). Alternative splicing of this gene results in two transcript variants, which contain alternative first exons that are spliced to the remaining common exons.

Recommended Dilutions

IHC-P 1:50 - 1:200

Immunogen Information

Gene ID

25

Swiss Prot

P00519

Immunogen

Recombinant fusion protein containing a sequence corresponding to amino acids 1000-1130 of human c-Abl (NP_005148.2).

Synonyms

ABL; JTK7; p150; c-ABL; v-abl; CHDSKM; c-ABL1; BCR-ABL; bcr/abl; c-Abl

Contact

 | 400-999-6126 | cn.market@abclonal.com.cn | www.abclonal.com.cn

Product Information

Source

Rabbit

Isotype

IgG

Purification

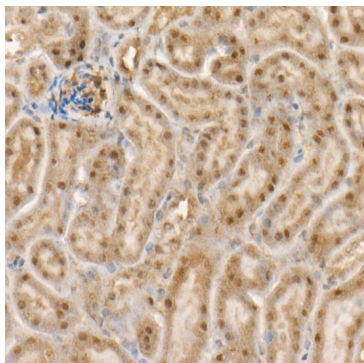
Affinity purification

Storage

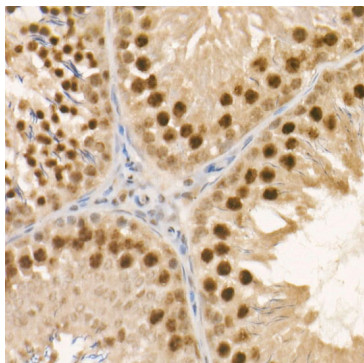
Store at -20°C. Avoid freeze / thaw cycles.

Buffer: PBS with 0.05% proclin300, 0.05% BSA, 50% glycerol, pH7.3.

Validation Data



Immunohistochemistry analysis of paraffin-embedded mouse kidney using c-Abl Rabbit mAb (A22199) at dilution of 1:100(40x lens).Perform high pressure antigen retrieval with 10 mM citrate buffer pH 6.0 before commencing with IHC staining protocol.



Immunohistochemistry analysis of paraffin-embedded rat testis using c-Abl Rabbit mAb (A22199) at dilution of 1:100(40x lens).Perform high pressure antigen retrieval with 10 mM citrate buffer pH 6.0 before commencing with IHC staining protocol.