

ABflo® 647 Rabbit anti-Human CD7 mAb

Catalog No.: A22194

Basic Information

Observed MW

Calculated MW
25kDa

Category
Primary antibody

Applications
FC

Cross-Reactivity
Human

CloneNo number
ARC54668

Conjugate
ABflo® 647. Ex:648nm. Em:664nm.

Background

This gene encodes a transmembrane protein which is a member of the immunoglobulin superfamily. This protein is found on thymocytes and mature T cells. It plays an essential role in T-cell interactions and also in T-cell/B-cell interaction during early lymphoid development.

Recommended Dilutions

FC 5 µl per 10⁶ cells in
100 µl volume

Immunogen Information

Gene ID	Swiss Prot
924	P09564

Immunogen

Recombinant protein (or fragment). This information is considered to be commercially sensitive.

Synonyms

GP40; TP41; Tp40; LEU-9

Contact

☎	400-999-6126
✉	cn.market@abclonal.com.cn
🌐	www.abclonal.com.cn

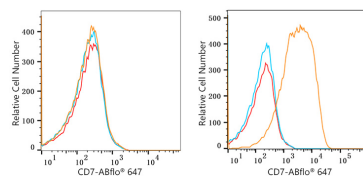
Product Information

Source	Isotype	Purification
Rabbit	IgG	Affinity purification

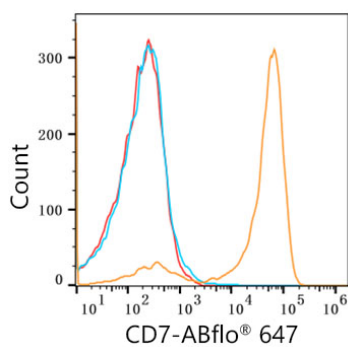
Storage

Store at 2-8°C. Avoid freeze.
Buffer: PBS containing 0.2% BSA, preserved with proclin300 or sodium azide (as specified on the Certificate of Analysis), pH 7.3.

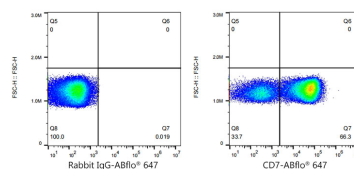
Validation Data



Flow cytometry: 1×10^6 A549 cells (negative control, left) and MOLT-4 cells (right) were surface-stained with ABflo® 647 Rabbit anti-Human CD7 mAb (A22194, 5 μ l/Test, orange line) or ABflo® 647 Rabbit IgG isotype control (A22070, 5 μ l/Test, blue line). Non-fluorescently stained cells were used as blank control (red line).



Flow cytometry: 1×10^6 Human PBMC were surface-stained with ABflo® 647 Rabbit anti-Human CD7 mAb (A22194, 5 μ l/Test, orange line) or ABflo® 647 Rabbit IgG isotype control (A22070, 5 μ l/Test, blue line). Non-fluorescently stained Human PBMC was used as blank control (red line).



Flow cytometry: 1×10^6 Human PBMC were surface-stained with ABflo® 647 Rabbit IgG isotype control (A22070, 5 μ l/Test, left) or ABflo® 647 Rabbit anti-Human CD7 mAb (A22194, 5 μ l/Test, right).