

ABflo® 647 Rabbit anti-Human/Monkey CD29/Integrin-β1 mAb

Catalog No.: A22192

Basic Information

Observed MW

Refer to figures

Calculated MW

87kDa/88kDa/91kDa

Category

Primary antibody

Applications

FC

Cross-Reactivity

Human, Cynomolgus

CloneNo number

ARC52470

Conjugate

ABflo® 647. Ex:648nm. Em:664nm.

Recommended Dilutions

FC 5 μl per 10⁶ cells in
100 μl volume

Background

Integrins are heterodimeric proteins made up of alpha and beta subunits. At least 18 alpha and 8 beta subunits have been described in mammals. Integrin family members are membrane receptors involved in cell adhesion and recognition in a variety of processes including embryogenesis, hemostasis, tissue repair, immune response and metastatic diffusion of tumor cells. This gene encodes a beta subunit. Multiple alternatively spliced transcript variants which encode different protein isoforms have been found for this gene.

Immunogen Information

Gene ID

Hu 3688 Cyon 102144610

Swiss Prot

P05556

Immunogen

Recombinant protein (or fragment). This information is considered to be commercially sensitive.

Synonyms

CD29; FNRB; MDF2; VLAB; GPIIA; MSK12; VLA-BETA

Contact

 | 400-999-6126

 | cn.market@abclonal.com.cn

 | www.abclonal.com.cn

Product Information

Source

Rabbit

Isotype

IgG

Purification

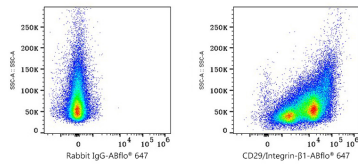
Affinity purification

Storage

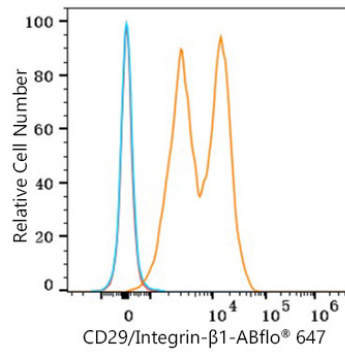
Store at 2-8°C. Avoid freeze.

Buffer: PBS containing 0.2% BSA, preserved with proclin300 or sodium azide (as specified on the Certificate of Analysis), pH 7.3.

Validation Data



Flow cytometry: 1×10^6 Cynomolgus PBMC were surface-stained with ABflo® 647 Rabbit IgG isotype control (A22070, 5 μ l/Test, left) or ABflo® 647 Rabbit anti-Human/Monkey CD29/Integrin- β 1 mAb (A22192, 5 μ l/Test, right). Cells in the lymphocyte and monocyte gate were used for analysis.



Flow cytometry: 1×10^6 Human PBMC were surface-stained ABflo® 647 Rabbit anti-Human/Monkey CD29/Integrin- β 1 mAb (A22192, 5 μ l/Test, orange line) or ABflo® 647 Rabbit IgG isotype control (A22070, 5 μ l/Test, blue line). Non-fluorescently stained cells were used as blank control (red line). Cells in the lymphocyte gate were used for analysis.