

# PAX8 Rabbit mAb

Catalog No.: A22164 **Recombinant**

## Basic Information

### Observed MW

Refer to figures

### Calculated MW

48kDa

### Category

Primary antibody

### Applications

ELISA, IHC-P

### Cross-Reactivity

Human

### CloneNo number

ARC55538

## Background

This gene encodes a member of the paired box (PAX) family of transcription factors. Members of this gene family typically encode proteins that contain a paired box domain, an octapeptide, and a paired-type homeodomain. This nuclear protein is involved in thyroid follicular cell development and expression of thyroid-specific genes. Mutations in this gene have been associated with thyroid dysgenesis, thyroid follicular carcinomas and atypical follicular thyroid adenomas. Alternatively spliced transcript variants encoding different isoforms have been described.

## Recommended Dilutions

IHC-P 1:100 - 1:500

## Immunogen Information

### Gene ID

7849

### Swiss Prot

Q06710

### Immunogen

A synthetic peptide corresponding to a sequence within amino acids 200-300 of human PAX8 (NP\_003457.1).

### Synonyms

PAX-8; PAX8

## Contact

☎ | 400-999-6126

✉ | [cn.market@abclonal.com.cn](mailto:cn.market@abclonal.com.cn)

🌐 | [www.abclonal.com.cn](http://www.abclonal.com.cn)

## Product Information

### Source

Rabbit

### Isotype

IgG

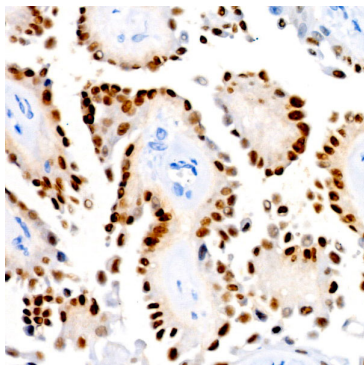
### Purification

Affinity purification

### Storage

Store at -20°C. Avoid freeze / thaw cycles.

Buffer: PBS with 0.05% proclin300, 0.05% BSA, 50% glycerol, pH7.3.



Immunohistochemistry analysis of PAX8 in paraffin-embedded Human thyroid cancer using PAX8 Rabbit mAb (A22164) at dilution of 1:300 (40x lens). Perform high pressure antigen retrieval with 10 mM citrate buffer pH 6.0 before commencing with IHC staining protocol.