

ABflo® 488 Rabbit anti-Human/Mouse CD276/B7-H3 mAb

Catalog No.: A22156

Basic Information

Observed MW

Calculated MW

33kDa/52kDa/57kDa

Category

Primary antibody

Applications

FC

Cross-Reactivity

Human, Mouse

CloneNo number

ARC54779

Conjugate

ABflo® 488. Ex:491nm. Em:516nm.

Background

The protein encoded by this gene belongs to the immunoglobulin superfamily, and thought to participate in the regulation of T-cell-mediated immune response. Studies show that while the transcript of this gene is ubiquitously expressed in normal tissues and solid tumors, the protein is preferentially expressed only in tumor tissues. Additionally, it was observed that the 3' UTR of this transcript contains a target site for miR29 microRNA, and there is an inverse correlation between the expression of this protein and miR29 levels, suggesting regulation of expression of this gene product by miR29. Alternatively spliced transcript variants encoding different isoforms have been found for this gene.

Recommended Dilutions

FC 5 µl per 10⁶ cells in
100 µl volume

Immunogen Information

Gene ID

80381

Swiss Prot

Q5ZPR3-2

Immunogen

Recombinant protein (or fragment). This information is considered to be commercially sensitive.

Synonyms

B7H3; B7-H3; B7RP-2; 4Ig-B7-H3

Contact

☎ | 400-999-6126

✉ | cn.market@abclonal.com.cn

🌐 | www.abclonal.com.cn

Product Information

Source

Rabbit

Isotype

IgG

Purification

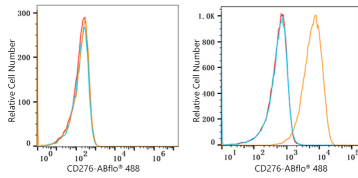
Affinity purification

Storage

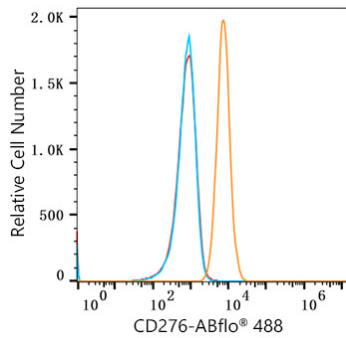
Store at 2-8°C. Avoid freeze.

Buffer: PBS containing 0.2% BSA, preserved with proclin300 or sodium azide (as specified on the Certificate of Analysis), pH 7.3.

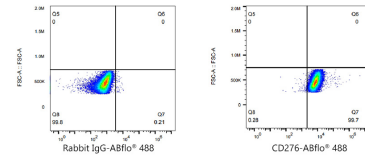
Validation Data



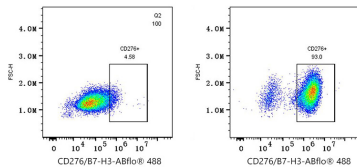
Flow cytometry: 1×10^6 Jurkat cells (negative control, left) and PC-3 cells (right) were surface-stained with ABflo® 488 Rabbit anti-Human/Mouse CD276/B7-H3 mAb (A22156, 5 μ l/Test, orange line) or ABflo® 488 Rabbit IgG isotype control (A22069, 5 μ l/Test, blue line). Non-fluorescently stained cells were used as blank control (red line).



Flow cytometry: 1×10^6 C2C12 cells were surface-stained with ABflo® 488 Rabbit anti-Human/Mouse CD276/B7-H3 mAb (A22156, 5 μ l/Test, orange line) or ABflo® 488 Rabbit IgG isotype control (A22069, 5 μ l/Test, blue line). Non-fluorescently stained C2C12 cells was used as blank control (red line).



Flow cytometry: 1×10^6 C2C12 cells were surface-stained with ABflo® 488 Rabbit IgG isotype control (A22069, 5 μ l/Test, left) or ABflo® 488 Rabbit anti-Human/Mouse CD276/B7-H3 mAb (A22156, 5 μ l/Test, right).



Flow cytometry: 1×10^6 Human PBMC (left) and Human monocyte-derived immature dendritic cells (right) were surface-stained with ABflo® 488 Rabbit anti-Human/Mouse CD276/B7-H3 mAb (A22156, 5 μ l/Test).