

TGF beta Receptor I (TGFBR1) Rabbit mAb

Catalog No.: A22151 **Recombinant** **1 Publications**

Basic Information

Observed MW

56kDa

Calculated MW

56kDa

Category

Primary antibody

Applications

WB,ELISA

Cross-Reactivity

Human

CloneNo number

ARC55592

Background

The protein encoded by this gene forms a heteromeric complex with type II TGF-beta receptors when bound to TGF-beta, transducing the TGF-beta signal from the cell surface to the cytoplasm. The encoded protein is a serine/threonine protein kinase. Mutations in this gene have been associated with Loeys-Dietz aortic aneurysm syndrome (LDAS). Multiple transcript variants encoding different isoforms have been found for this gene.

Recommended Dilutions

WB 1:2000 - 1:8000

ELISA Recommended starting concentration is 1 µg/mL. Please optimize the concentration based on your specific assay requirements.

Immunogen Information

Gene ID

7046

Swiss Prot

P36897

Immunogen

Synthetic peptide. This information is considered to be commercially sensitive.

Synonyms

AAT5; ALK5; ESS1; LDS1; MSSE; SKR4; TBRI; ALK-5; LDS1A; LDS2A; TBR-i; TGFR-1; ACVRLK4; tbetaR-I; TGF beta Receptor I (TGFBR1)

Contact

☎ | 400-999-6126

✉ | cn.market@abclonal.com.cn

🌐 | www.abclonal.com.cn

Product Information

Source

Rabbit

Isotype

IgG

Purification

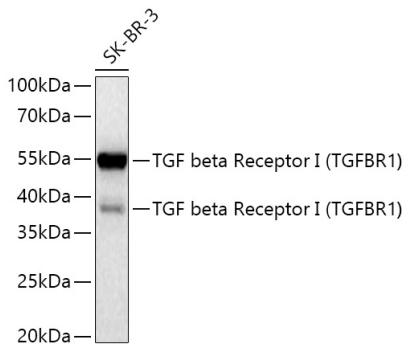
Affinity purification

Storage

Store at -20°C. Avoid freeze / thaw cycles.

Buffer: PBS with 0.09% Sodium azide,0.05% BSA,50% glycerol,pH7.3.

Validation Data



Western blot analysis of lysates from SK-BR-3 cells using TGF beta Receptor I (TGFBRI) Rabbit mAb (A22151) at 1:5000 dilution incubated at room temperature for 1.5 hours.
Secondary antibody: HRP-conjugated Goat anti-Rabbit IgG (H+L) (AS014) at 1:10000 dilution.
Lysates/proteins: 25 µg per lane.
Blocking buffer: 3% nonfat dry milk in TBST.
Detection: ECL Basic Kit (RM00020).
Exposure time: 90 s.