

# [KD Validated] PGC1 $\alpha$ Rabbit pAb

**Catalog No.: A22113**

## Basic Information

**Observed MW**

100kDa

**Calculated MW**

91kDa

**Category**

Primary antibody

**Applications**

ELISA, WB, IHC-P, IF/ICC

**Cross-Reactivity**

Human, Mouse, Rat

## Background

The protein encoded by this gene is a transcriptional coactivator that regulates the genes involved in energy metabolism. This protein interacts with PPARgamma, which permits the interaction of this protein with multiple transcription factors. This protein can interact with, and regulate the activities of, cAMP response element binding protein (CREB) and nuclear respiratory factors (NRFs). It provides a direct link between external physiological stimuli and the regulation of mitochondrial biogenesis, and is a major factor that regulates muscle fiber type determination. This protein may be also involved in controlling blood pressure, regulating cellular cholesterol homeostasis, and the development of obesity.

## Recommended Dilutions

<b>WB</b>	1:100 - 1:500
<b>IHC-P</b>	1:50 - 1:200
<b>IF/ICC</b>	1:50 - 1:200

## Immunogen Information

**Gene ID**

10891

**Swiss Prot**

Q9UBK2

**Immunogen**

A synthetic peptide corresponding to a sequence within amino acids 611-710 of human PGC1 $\alpha$  (NP\_037393.1).

**Synonyms**LEM6; PGC1; PGC1A; PGC-1v; PPARGC1; PGC-1alpha; PGC-1(alpha); [KD Validated] PGC1 $\alpha$ 

## Contact

	400-999-6126
	<a href="mailto:cn.market@abclonal.com.cn">cn.market@abclonal.com.cn</a>
	<a href="http://www.abclonal.com.cn">www.abclonal.com.cn</a>

## Product Information

**Source**

Rabbit

**Isotype**

IgG

**Purification**

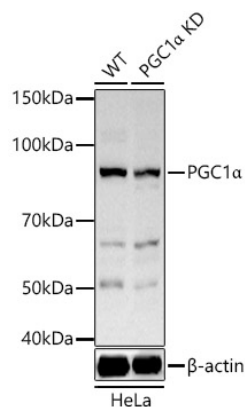
Affinity purification

**Storage**

Store at -20°C. Avoid freeze / thaw cycles.

Buffer: PBS with 0.05% proclin300, 50% glycerol, pH7.3.

## Validation Data



Western blot analysis of lysates from wild type (WT) and PGC1 $\alpha$  knockdown (KD) HeLa cells, using [KD Validated] PGC1 $\alpha$  Rabbit pAb (A22113) at 1:400 dilution.

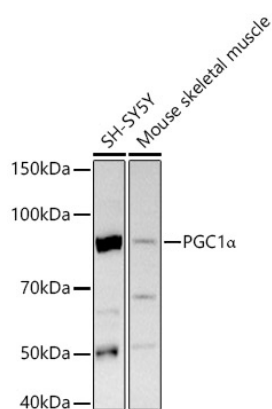
Secondary antibody: HRP Goat Anti-Rabbit IgG (H+L) (AS014) at 1:10000 dilution.

Lysates/proteins: 25 $\mu$ g per lane.

Blocking buffer: 3% nonfat dry milk in TBST.

Detection: ECL Basic Kit (RM00020).

Exposure time: 30s.



Western blot analysis of various lysates, using [KD Validated] PGC1 $\alpha$  Rabbit pAb (A22113) at 1:400 dilution.

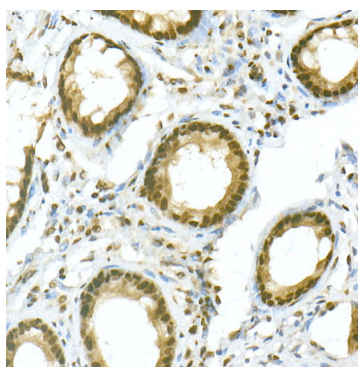
Secondary antibody: HRP Goat Anti-Rabbit IgG (H+L) (AS014) at 1:10000 dilution.

Lysates/proteins: 25 $\mu$ g per lane.

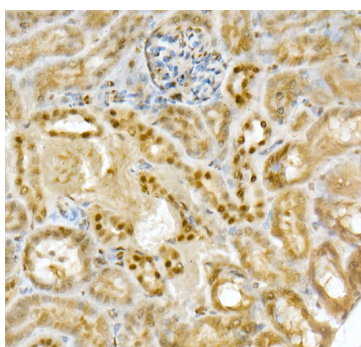
Blocking buffer: 3% nonfat dry milk in TBST.

Detection: ECL Basic Kit (RM00020).

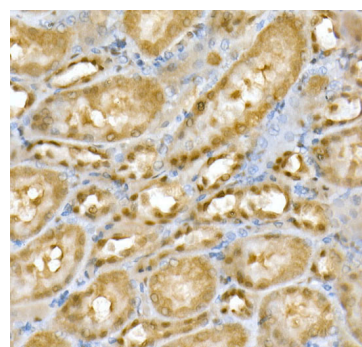
Exposure time: 30s.



Immunohistochemistry analysis of paraffin-embedded human colon using [KO Validated] PGC1 $\alpha$  Rabbit pAb (A22113) at dilution of 1:20 (40x lens). Perform high pressure antigen retrieval with 10 mM citrate buffer pH 6.0 before commencing with IHC staining protocol.



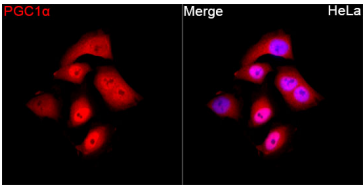
Immunohistochemistry analysis of paraffin-embedded mouse kidney using [KO Validated] PGC1 $\alpha$  Rabbit pAb (A22113) at dilution of 1:20 (40x lens). Perform high pressure antigen retrieval with 10 mM citrate buffer pH 6.0 before commencing with IHC staining protocol.



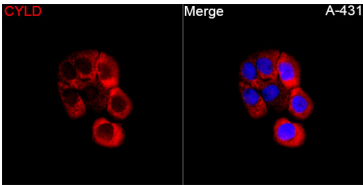
Immunohistochemistry analysis of paraffin-embedded rat kidney using [KO Validated] PGC1 $\alpha$  Rabbit pAb (A22113) at dilution of 1:20 (40x lens). Perform high pressure antigen retrieval with 10 mM citrate buffer pH 6.0 before commencing with IHC staining protocol.

## Validation Data

---



Immunofluorescence analysis of HeLa cells using [KD Validated] PGC1α Rabbit pAb(A22113) at a dilution of 1:100 (40x lens). Secondary antibody: Cy3 Goat Anti-Rabbit IgG (H+L)(AS007) at 1:500 dilution. Blue: DAPI for nuclear staining.



Immunofluorescence analysis of A-431 cells using [KD Validated] PGC1α Rabbit pAb(A22113) at a dilution of 1:100 (40x lens). Secondary antibody: Cy3 Goat Anti-Rabbit IgG (H+L)(AS007) at 1:500 dilution. Blue: DAPI for nuclear staining.