

# ASC/TMS1 Rabbit mAb

Catalog No.: A22046

Recombinant

22 Publications

## Basic Information

**Observed MW**

19kDa/22kDa

**Calculated MW**

22kDa

**Category**

Primary antibody

**Applications**

WB, IHC-P, ELISA

**Cross-Reactivity**

Human, Mouse, Rat

**CloneNo number**

ARC54741

## Background

This gene encodes an adaptor protein that is composed of two protein-protein interaction domains: a N-terminal PYRIN-PAAD-DAPIN domain (PYD) and a C-terminal caspase-recruitment domain (CARD). The PYD and CARD domains are members of the six-helix bundle death domain-fold superfamily that mediates assembly of large signaling complexes in the inflammatory and apoptotic signaling pathways via the activation of caspase. In normal cells, this protein is localized to the cytoplasm; however, in cells undergoing apoptosis, it forms ball-like aggregates near the nuclear periphery. Two transcript variants encoding different isoforms have been found for this gene.

## Recommended Dilutions

**WB** 1:6000 - 1:36000**IHC-P** 1:200 - 1:2000

**ELISA** Recommended starting concentration is 1 µg/mL. Please optimize the concentration based on your specific assay requirements.

## Immunogen Information

**Gene ID**

29108

**Swiss Prot**

Q9ULZ3

**Immunogen**

Recombinant protein (or fragment). This information is considered to be commercially sensitive.

**Synonyms**

ASC; TMS; TMS1; CARD5; TMS-1; ASC/TMS1

## Contact

 | 400-999-6126 | [cn.market@abclonal.com.cn](mailto:cn.market@abclonal.com.cn) | [www.abclonal.com.cn](http://www.abclonal.com.cn)

## Product Information

**Source**

Rabbit

**Isotype**

IgG

**Purification**

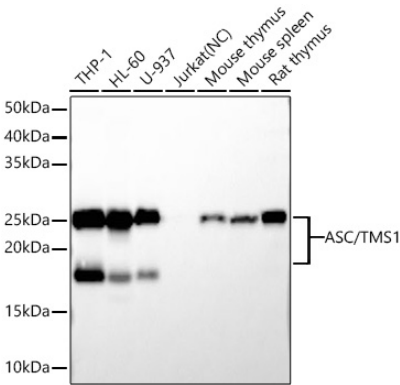
Affinity purification

**Storage**

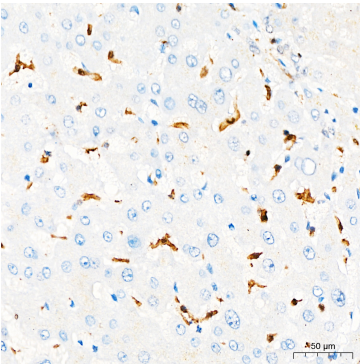
Store at -20°C. Avoid freeze / thaw cycles.

Buffer: PBS containing 50% glycerol and 0.05% BSA, preserved with proclin300 or sodium azide (as specified on the Certificate of Analysis), pH 7.3.

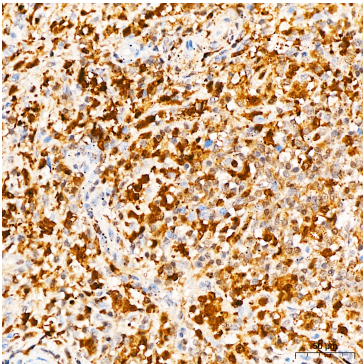
## Validation Data



Western blot analysis of various lysates using ASC/TMS1 Rabbit mAb (A22046) at 1:12000 dilution incubated at room temperature for 1.5 hours.  
Secondary antibody: HRP-conjugated Goat anti-Rabbit IgG (H+L) (AS014) at 1:10000 dilution.  
Lysates/proteins: 25 µg per lane.  
Blocking buffer: 3% nonfat dry milk in TBST.  
Detection: ECL Basic Kit (RM00020).  
Negative control (NC): Jurkat  
Exposure time: 10s.



Immunohistochemistry analysis of paraffin-embedded Human liver tissue using ASC/TMS1 Rabbit mAb (A22046) at a dilution of 1:200 (40x lens). High pressure antigen retrieval performed with 0.01M Citrate buffer (pH 6.0) prior to IHC staining.



Immunohistochemistry analysis of paraffin-embedded Human spleen tissue using ASC/TMS1 Rabbit mAb (A22046) at a dilution of 1:200 (40x lens). High pressure antigen retrieval performed with 0.01M Citrate buffer (pH 6.0) prior to IHC staining.