

SQSTM1 Rabbit pAb

Catalog No.: A22025

Basic Information

Observed MW

62kDa

Calculated MW

48kDa

Category

Primary antibody

Applications

WB, ELISA

Cross-Reactivity

Human, Mouse, Rat

Background

Enables K63-linked polyubiquitin modification-dependent protein binding activity; identical protein binding activity; and ionotropic glutamate receptor binding activity. Involved in several processes, including brown fat cell proliferation; energy homeostasis; and positive regulation of long-term synaptic potentiation. Acts upstream of or within negative regulation of transcription by RNA polymerase II. Located in several cellular components, including aggresome; autolysosome; and sperm midpiece. Is expressed in several structures, including alimentary system; central nervous system; genitourinary system; limb; and sensory organ. Used to study Paget's disease of bone. Human ortholog(s) of this gene implicated in GNE myopathy; Paget's disease of bone; and frontotemporal dementia and/or amyotrophic lateral sclerosis-3. Orthologous to human SQSTM1 (sequestosome 1).

Recommended Dilutions

WB 1:500 - 1:2000

ELISA Recommended starting concentration is 1 µg/mL. Please optimize the concentration based on your specific assay requirements.

Immunogen Information

Gene ID

18412

Swiss Prot

Q64337

Immunogen

Synthetic peptide. This information is considered to be commercially sensitive.

Synonyms

Osi; p62; A170; STAP; OSF-6; STONE14; SQSTM1

Contact

☎ | 400-999-6126

✉ | cn.market@abclonal.com.cn

🌐 | www.abclonal.com.cn

Product Information

Source

Rabbit

Isotype

IgG

Purification

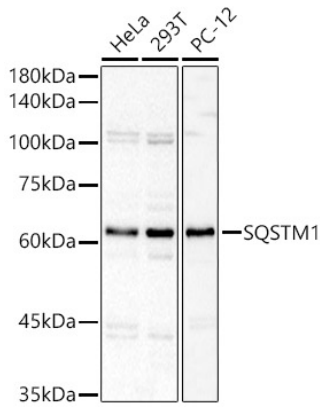
Affinity purification

Storage

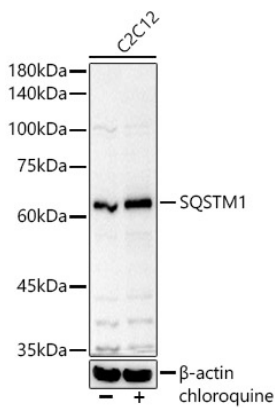
Store at -20°C. Avoid freeze / thaw cycles.

Buffer: PBS containing 50% glycerol, preserved with proclin300 or sodium azide (as specified on the Certificate of Analysis), pH 7.3.

Validation Data



Western blot analysis of various lysates, using SQSTM1 Rabbit pAb (A22025) at 1:600 dilution.
Secondary antibody: HRP-conjugated Goat anti-Rabbit IgG (H+L) (AS014) at 1:10000 dilution.
Lysates/proteins: 25µg per lane.
Blocking buffer: 3% nonfat dry milk in TBST.
Detection: ECL Basic Kit (RM00020).
Exposure time: 3s.



Western blot analysis of lysates from C2C12 cells, using SQSTM1 Rabbit pAb (A22025) at 1:600 dilution.
C2C12 cells were treated with Chloroquine (50 µM) at 37°C for 20 hours.
Secondary antibody: HRP-conjugated Goat anti-Rabbit IgG (H+L) (AS014) at 1:10000 dilution.
Lysates/proteins: 25µg per lane.
Blocking buffer: 3% nonfat dry milk in TBST.
Detection: ECL Basic Kit (RM00020).
Exposure time: 3s.