

# Mesothelin Rabbit mAb

Catalog No.: A21982 **Recombinant**

## Basic Information

### Observed MW

40 kDa/69 kDa

### Calculated MW

69kDa

### Category

Primary antibody

### Applications

WB,Auto WB,IHC-P,ELISA

### Cross-Reactivity

Human

### CloneNo number

ARC54390

## Background

This gene encodes a preproprotein that is proteolytically processed to generate two protein products, megakaryocyte potentiating factor and mesothelin. Megakaryocyte potentiating factor functions as a cytokine that can stimulate colony formation of bone marrow megakaryocytes. Mesothelin is a glycosylphosphatidylinositol-anchored cell-surface protein that may function as a cell adhesion protein. This protein is overexpressed in epithelial mesotheliomas, ovarian cancers and in specific squamous cell carcinomas. Alternative splicing results in multiple transcript variants, at least one of which encodes an isoform that is proteolytically processed.

## Recommended Dilutions

**WB** 1:2000 - 1:20000

**Auto WB** 1:100 - 1:500

**IHC-P** 1:1000 - 1:5000

**ELISA** Recommended starting concentration is 1 µg/mL. Please optimize the concentration based on your specific assay requirements.

## Immunogen Information

### Gene ID

10232

### Swiss Prot

Q13421

### Immunogen

Recombinant protein (or fragment). This information is considered to be commercially sensitive.

### Synonyms

MPF; SMRP; Mesothelin

## Contact

☎ | 400-999-6126

✉ | [cn.market@abclonal.com.cn](mailto:cn.market@abclonal.com.cn)

🌐 | [www.abclonal.com.cn](http://www.abclonal.com.cn)

## Product Information

### Source

Rabbit

### Isotype

IgG

### Purification

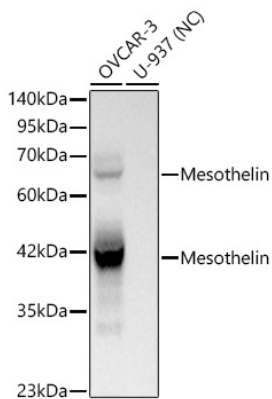
Affinity purification

### Storage

Store at -20°C. Avoid freeze / thaw cycles.

Buffer: PBS containing 50% glycerol and 0.05% BSA, preserved with proclin300 or sodium azide (as specified on the Certificate of Analysis), pH 7.3.

## Validation Data



Western blot analysis of lysates from OVCAR3 cell, using Mesothelin Rabbit mAb (A21982) at 1:2000 dilution.

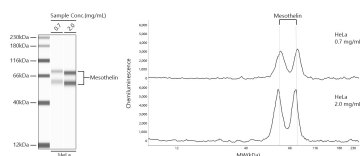
Secondary antibody: HRP-conjugated Goat anti-Rabbit IgG (H+L) (AS014) at 1:10000 dilution.

Lysates/proteins: 25µg per lane.

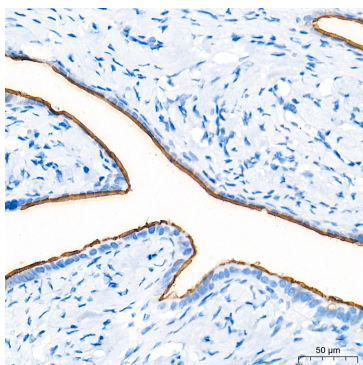
Blocking buffer: 3% nonfat dry milk in TBST.

Detection: ECL Basic Kit (RM00020).

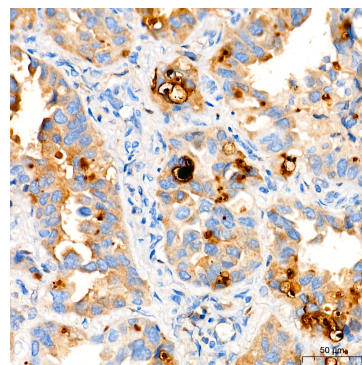
Exposure time: 0.1s.



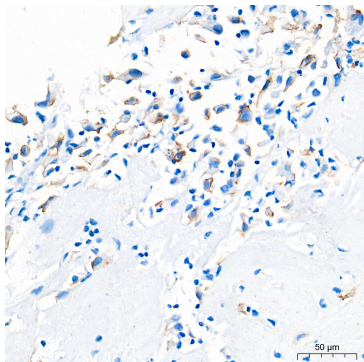
Simple Western™ analysis of lysates from HeLa cells using Mesothelin Rabbit mAb (A21982) at 1:100 dilution. The virtual lane view (left) shows the target band (as indicated) with samples in concentrations of 0.7 mg/mL and 2.0 mg/mL. The corresponding electropherogram view (right) plots chemiluminescence intensity against molecular weight along the capillary for sample concentrations of 0.7 mg/mL and 2.0 mg/mL. This experiment was performed under reducing conditions on the Jess™ Simple Western instrument from ProteinSimple, a BioTechne brand, using the 12-230 kDa separation module.



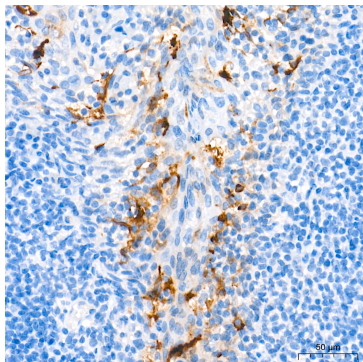
Immunohistochemistry analysis of paraffin-embedded Human fallopian tube tissue using Mesothelin Rabbit mAb (A21982) at a dilution of 1:2000 (40x lens). High pressure antigen retrieval performed with 0.01M Tris-EDTA Buffer (pH 9.0) prior to IHC staining.



Immunohistochemistry analysis of paraffin-embedded Human lung squamous carcinoma tissue using Mesothelin Rabbit mAb (A21982) at a dilution of 1:2000 (40x lens). High pressure antigen retrieval performed with 0.01M Tris-EDTA Buffer (pH 9.0) prior to IHC staining.



Immunohistochemistry analysis of paraffin-embedded Human Mesothelioma tissue using Mesothelin Rabbit mAb (A21982) at a dilution of 1:2000 (40x lens). High pressure antigen retrieval performed with 0.01M Tris-



Immunohistochemistry analysis of paraffin-embedded Human tonsil tissue using Mesothelin Rabbit mAb (A21982) at a dilution of 1:2000 (40x lens). High pressure antigen retrieval performed with 0.01M Tris-

## Validation Data

---

EDTA Buffer (pH 9.0) prior to IHC staining.

EDTA Buffer (pH 9.0) prior to IHC staining.