

# TIFY10A Rabbit pAb

Catalog No.: A21960

## Basic Information

### Observed MW

32kDa

### Calculated MW

28kDa

### Category

Primary antibody

### Applications

WB, ELISA

### Cross-Reactivity

Arabidopsis thaliana

## Background

JAZ1 is a nuclear-localized protein involved in jasmonate signaling. JAZ1 transcript levels rise in response to a jasmonate stimulus. JAZ1 can interact with the COI1 F-box subunit of an SCF E3 ubiquitin ligase in a yeast-two-hybrid assay only in the presence of jasmonate-iso-leucine (JA-ILE) or coronatine. Application of jasmonate methyl ester to Arabidopsis roots reduces the levels of a JAZ1:GUS fusion protein, presumably by stimulating ubiquitin-proteasome-mediated degradation. The Jas domain appears to be important for JAZ1-COI1 interactions in the presence of coronatine. Two positive residues (R205 and R206) in the Jas domain shown to be important for coronatine -dependent COI1 binding are not required for binding AtMYC2.

## Recommended Dilutions

**WB** 1:500 - 1:1000

**ELISA** Recommended starting concentration is 1 µg/mL. Please optimize the concentration based on your specific assay requirements.

## Immunogen Information

### Gene ID

838501

### Swiss Prot

Q9LMA8

### Immunogen

Synthetic peptide. This information is considered to be commercially sensitive.

### Synonyms

AtJAZ1; jasmonate-zim-domain protein 1; T29M8.5; T29M8\_5; TIFY10A

## Contact

☎ | 400-999-6126

✉ | [cn.market@abclonal.com.cn](mailto:cn.market@abclonal.com.cn)

🌐 | [www.abclonal.com.cn](http://www.abclonal.com.cn)

## Product Information

### Source

Rabbit

### Isotype

IgG

### Purification

Affinity purification

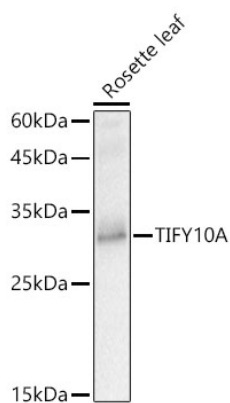
### Storage

Store at -20°C. Avoid freeze / thaw cycles.

Buffer: PBS with 0.05% proclin300, 50% glycerol, pH7.3.

## Validation Data

---



Western blot analysis of lysates from Rosette leaf, using TIFY10A Rabbit pAb (A21960) at 1:1000 dilution.  
Secondary antibody: HRP-conjugated Goat anti-Rabbit IgG (H+L) (AS014) at 1:10000 dilution.  
Lysates/proteins: 25µg per lane.  
Blocking buffer: 3% nonfat dry milk in TBST.  
Detection: ECL Basic Kit (RM00020).  
Exposure time: 1s.