

# MICU1 Rabbit pAb

Catalog No.: A21948 **2 Publications**

## Basic Information

### Observed MW

46kDa

### Calculated MW

54kDa

### Category

Primary antibody

### Applications

WB, ELISA

### Cross-Reactivity

Human, Mouse, Rat

## Background

This gene encodes an essential regulator of mitochondrial  $\text{Ca}^{2+}$  uptake under basal conditions. The encoded protein interacts with the mitochondrial calcium uniporter, a mitochondrial inner membrane  $\text{Ca}^{2+}$  channel, and is essential in preventing mitochondrial  $\text{Ca}^{2+}$  overload, which can cause excessive production of reactive oxygen species and cell stress. Alternatively spliced transcript variants encoding different isoforms have been described.

## Recommended Dilutions

**WB** 1:100 - 1:500

**ELISA** Recommended starting concentration is 1  $\mu\text{g/mL}$ . Please optimize the concentration based on your specific assay requirements.

## Immunogen Information

### Gene ID

10367

### Swiss Prot

Q9BPX6

### Immunogen

Recombinant fusion protein containing a sequence corresponding to amino acids 105-255 of human MICU1 (NP\_001182447.1).

### Synonyms

CALC; EFHA3; MPXPS; CBARA1; ara CALC; MICU1

## Contact

☎ | 400-999-6126

✉ | [cn.market@abclonal.com.cn](mailto:cn.market@abclonal.com.cn)

🌐 | [www.abclonal.com.cn](http://www.abclonal.com.cn)

## Product Information

### Source

Rabbit

### Isotype

IgG

### Purification

Affinity purification

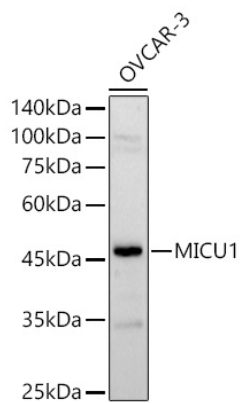
### Storage

Store at  $-20^{\circ}\text{C}$ . Avoid freeze / thaw cycles.

Buffer: PBS with 0.05% proclin300, 50% glycerol, pH7.3.

## Validation Data

---



Western blot analysis of various lysates, using MICU1 Rabbit pAb (A21948) at 1:500 dilution.  
Secondary antibody: HRP-conjugated Goat anti-Rabbit IgG (H+L) (AS014) at 1:10000 dilution.  
Lysates/proteins: 25µg per lane.  
Blocking buffer: 3% nonfat dry milk in TBST.  
Detection: ECL Enhanced Kit (RM00021).  
Exposure time: 60s.