

L3MBTL3 Rabbit mAb

Catalog No.: A21932 **Recombinant**

Basic Information

Observed MW

100 kDa

Calculated MW

88kDa

Category

Primary antibody

Applications

WB,IP,ELISA

Cross-Reactivity

Human

CloneNo number

ARC54019

Background

This gene encodes a member of the malignant brain tumor (MBT) family of chromatin interacting transcriptional repressors. Members of this family function as methyl-lysine readers, which recognize methylated lysine residues on histone protein tails, and are associated with the repression of gene expression. The encoded protein may regulate hematopoiesis. Homozygous deletion of this gene has been observed in human patients with medulloblastoma.

Recommended Dilutions

WB 1:2000 - 1:5000

IP 0.5µg-4µg antibody for
200µg-400µg extracts of
whole cells

ELISA Recommended starting
concentration is 1 µg/mL.
Please optimize the
concentration based on
your specific assay
requirements.

Immunogen Information

Gene ID

84456

Swiss Prot

Q96JM7

Immunogen

Recombinant protein (or fragment). This information is considered to be commercially sensitive.

Synonyms

MBT1; MBT-1; L3MBTL3

Contact

☎ | 400-999-6126

✉ | cn.market@abclonal.com.cn

🌐 | www.abclonal.com.cn

Product Information

Source

Rabbit

Isotype

IgG

Purification

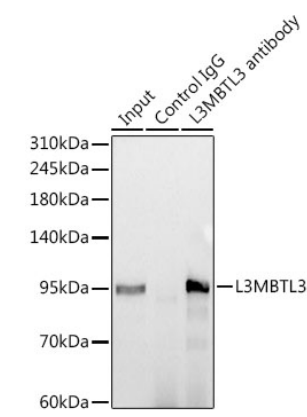
Affinity purification

Storage

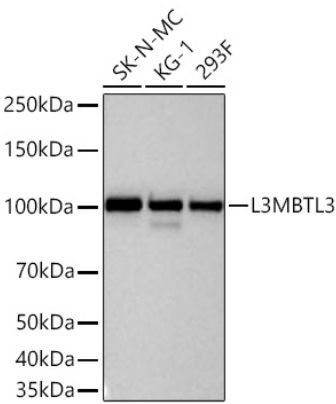
Store at -20°C. Avoid freeze / thaw cycles.

Buffer: PBS containing 50% glycerol and 0.05% BSA, preserved with proclin300 or sodium azide (as specified on the Certificate of Analysis), pH 7.3.

Validation Data



Immunoprecipitation analysis of 300 µg extracts from 293F cells 3 µg L3MBTL3 Rabbit mAb (A21932 1:100). Western blot was performed from the immunoprecipitate using L3MBTL3 Rabbit mAb (A21932) at a dilution of 1:2000. Secondary antibody: HRP Goat Anti-Rabbit IgG (H+L) (AS014) at 1:5000 dilution.



Western blot analysis of various lysates using L3MBTL3 Rabbit mAb (A21932) at 1:5000 dilution incubated overnight at 4°C. Secondary antibody: HRP-conjugated Goat anti-Rabbit IgG (H+L) (AS014) at 1:10000 dilution. Lysates/proteins: 25 µg per lane. Blocking buffer: 3% nonfat dry milk in TBST. Detection: ECL Basic Kit (RM00020). Exposure time: 60 s.