

NF-kB p65/RelA Rabbit mAb

Catalog No.: A21898 **Recombinant**

Basic Information

Observed MW

Refer to figures

Calculated MW

60kDa

Category

Primary antibody

Applications

IHC-P,ELISA

Cross-Reactivity

Human

CloneNo number

ARC51077

Background

NF-kappa-B is a ubiquitous transcription factor involved in several biological processes. It is held in the cytoplasm in an inactive state by specific inhibitors. Upon degradation of the inhibitor, NF-kappa-B moves to the nucleus and activates transcription of specific genes. NF-kappa-B is composed of NFKB1 or NFKB2 bound to either REL, RELA, or RELB. The most abundant form of NF-kappa-B is NFKB1 complexed with the product of this gene, RELA. Four transcript variants encoding different isoforms have been found for this gene.

Recommended Dilutions

IHC-P 1:50 - 1:200

ELISA Recommended starting concentration is 1 µg/mL. Please optimize the concentration based on your specific assay requirements.

Immunogen Information

Gene ID

5970

Swiss Prot

Q04206

Immunogen

Synthetic peptide. This information is considered to be commercially sensitive.

Synonyms

p65; CMCU; NFKB3; AIF3BL3; NF-kB p65/RelA

Contact

☎ | 400-999-6126

✉ | cn.market@abclonal.com.cn

🌐 | www.abclonal.com.cn

Product Information

Source

Rabbit

Isotype

IgG

Purification

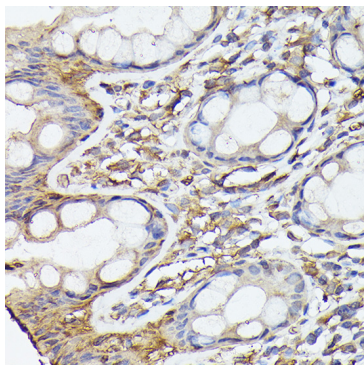
Affinity purification

Storage

Store at -20°C. Avoid freeze / thaw cycles.

Buffer: PBS with 0.05% proclin300,0.05% BSA,50% glycerol,pH7.3.

Validation Data



Immunohistochemistry analysis of paraffin-embedded Human colon using NF-kB p65/RelA Rabbit mAb (A21898) at dilution of 1:100 (40x lens). High pressure antigen retrieval performed with 0.01M Citrate buffer (pH 6.0) prior to IHC staining.