

# PDK1/PDPK1 Rabbit pAb

Catalog No.: A21810

## Basic Information

### Observed MW

58-68kDa

### Calculated MW

63kDa

### Category

Primary antibody

### Applications

WB, ELISA

### Cross-Reactivity

Human, Mouse, Rat

## Background

Enables 3-phosphoinositide-dependent protein kinase activity; phospholipase activator activity; and phospholipase binding activity. Involved in several processes, including cell surface receptor signaling pathway; regulation of protein kinase activity; and regulation of signal transduction. Acts upstream of or within intracellular signal transduction. Located in cell projection; cytosol; and plasma membrane. Implicated in prostate cancer. Biomarker of lung non-small cell carcinoma.

## Recommended Dilutions

**WB** 1:2000 - 1:6000

**ELISA** Recommended starting concentration is 1 µg/mL. Please optimize the concentration based on your specific assay requirements.

## Immunogen Information

### Gene ID

5170

### Swiss Prot

O15530

### Immunogen

Recombinant protein (or fragment). This information is considered to be commercially sensitive.

### Synonyms

PDK1; PDPK2; PDPK2P; PRO0461; PDK1/PDPK1

## Contact

☎ | 400-999-6126

✉ | [cn.market@abclonal.com.cn](mailto:cn.market@abclonal.com.cn)

🌐 | [www.abclonal.com.cn](http://www.abclonal.com.cn)

## Product Information

### Source

Rabbit

### Isotype

IgG

### Purification

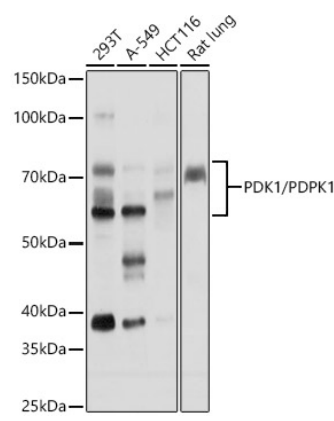
Affinity purification

### Storage

Store at -20°C. Avoid freeze / thaw cycles.

Buffer: PBS containing 50% glycerol, preserved with proclin300 or sodium azide (as specified on the Certificate of Analysis), pH 7.3.

# Validation Data



Western blot analysis of various lysates using PDK1/PDPK1 Rabbit pAb (A21810) at 1:5000 dilution. Secondary antibody: HRP-conjugated Goat anti-Rabbit IgG (H+L) (AS014) at 1:10000 dilution. Lysates/proteins: 25µg per lane. Blocking buffer: 3% nonfat dry milk in TBST. Detection: ECL Basic Kit (RM00020). Exposure time: 1s.