

# MAP1LC3B Rabbit pAb

Catalog No.: A21800

## Basic Information

### Observed MW

14kDa,16kDa

### Calculated MW

14kDa

### Category

Primary antibody

### Applications

WB,ELISA

### Cross-Reactivity

Human, Rat

## Background

The product of this gene is a subunit of neuronal microtubule-associated MAP1A and MAP1B proteins, which are involved in microtubule assembly and important for neurogenesis. Studies on the rat homolog implicate a role for this gene in autophagy, a process that involves the bulk degradation of cytoplasmic component.

## Recommended Dilutions

**WB** 1:500 - 1:1000

**ELISA** Recommended starting concentration is 1 µg/mL. Please optimize the concentration based on your specific assay requirements.

## Immunogen Information

### Gene ID

81631

### Swiss Prot

Q9GZQ8

### Immunogen

Synthetic peptide. This information is considered to be commercially sensitive.

### Synonyms

LC3B; ATG8F; MAP1LC3B-a; MAP1A/1BLC3; 3B

## Contact

 | 400-999-6126

 | [cn.market@abclonal.com.cn](mailto:cn.market@abclonal.com.cn)

 | [www.abclonal.com.cn](http://www.abclonal.com.cn)

## Product Information

### Source

Rabbit

### Isotype

IgG

### Purification

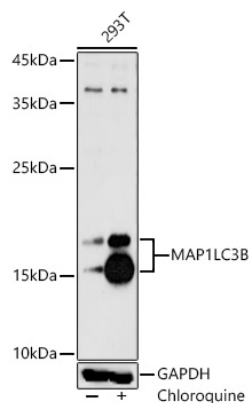
Affinity purification

### Storage

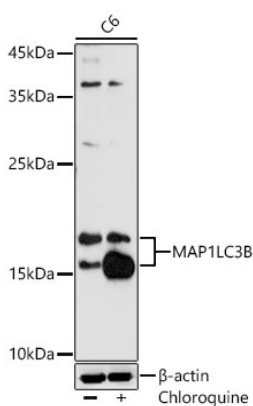
Store at -20°C. Avoid freeze / thaw cycles.

Buffer: PBS with 0.01% thimerosal, 50% glycerol, pH7.3.

## Validation Data



Western blot analysis of lysates from 293T cells using MAP1LC3B Rabbit pAb (A21800) at 1:1000 dilution. 293T cells were treated with Chloroquine (50  $\mu$ M) at 37°C for 20 hours. Secondary antibody: HRP-conjugated Goat anti-Rabbit IgG (H+L) (AS014) at 1:10000 dilution. Lysates/proteins: 25  $\mu$ g per lane. Blocking buffer: 3% nonfat dry milk in TBST. Detection: ECL Basic Kit (RM00020). Exposure time: 90s.



Western blot analysis of lysates from C6 cells using MAP1LC3B Rabbit pAb (A21800) at 1:1000 dilution. C6 cells were treated with Chloroquine (50  $\mu$ M) at 37°C for 20 hours. Secondary antibody: HRP-conjugated Goat anti-Rabbit IgG (H+L) (AS014) at 1:10000 dilution. Lysates/proteins: 25  $\mu$ g per lane. Blocking buffer: 3% nonfat dry milk in TBST. Detection: ECL Basic Kit (RM00020). Exposure time: 90s.