

# [KO Validated] PSAP Rabbit pAb

Catalog No.: A21761 **KO** Validated

## Basic Information

**Observed MW**

63kDa

**Calculated MW**

58kDa

**Category**

Primary antibody

**Applications**

WB, IHC-P, IF/ICC, ELISA

**Cross-Reactivity**

Human, Mouse, Rat

## Background

This gene encodes a highly conserved preproprotein that is proteolytically processed to generate four main cleavage products including saposins A, B, C, and D. Each domain of the precursor protein is approximately 80 amino acid residues long with nearly identical placement of cysteine residues and glycosylation sites. Saposins A-D localize primarily to the lysosomal compartment where they facilitate the catabolism of glycosphingolipids with short oligosaccharide groups. The precursor protein exists both as a secretory protein and as an integral membrane protein and has neurotrophic activities. Mutations in this gene have been associated with Gaucher disease and metachromatic leukodystrophy. Alternative splicing results in multiple transcript variants, at least one of which encodes an isoform that is proteolytically processed.

## Recommended Dilutions

**WB** 1:500 - 1:1000**IHC-P** 1:50 - 1:200**IF/ICC** 1:50 - 1:200

**ELISA** Recommended starting concentration is 1 µg/mL. Please optimize the concentration based on your specific assay requirements.

## Immunogen Information

**Gene ID**

5660

**Swiss Prot**

P07602

**Immunogen**

Recombinant protein (or fragment). This information is considered to be commercially sensitive.

**Synonyms**

GLBA; SAP1; SAP2; PSAPD; PARK24; AP

## Contact

 | 400-999-6126 | [cn.market@abclonal.com.cn](mailto:cn.market@abclonal.com.cn) | [www.abclonal.com.cn](http://www.abclonal.com.cn)

## Product Information

**Source**

Rabbit

**Isotype**

IgG

**Purification**

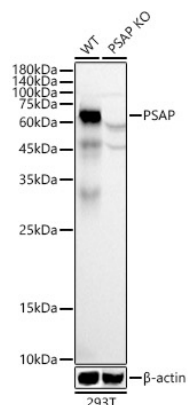
Affinity purification

**Storage**

Store at -20°C. Avoid freeze / thaw cycles.

Buffer: PBS containing 50% glycerol, preserved with proclin300 or sodium azide (as specified on the Certificate of Analysis), pH 7.3.

## Validation Data



Western blot analysis of lysates from wild type(WT) and PSAP Rabbit pAb knockout (KO) 293T cells, using [KO Validated] PSAP Rabbit pAb (A21761) at 1:1000 dilution.

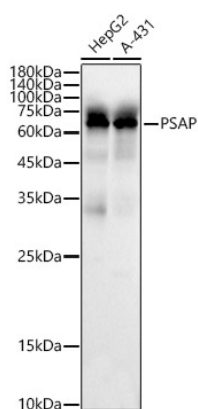
Secondary antibody: HRP-conjugated Goat anti-Rabbit IgG (H+L) (AS014) at 1:10000 dilution.

Lysates/proteins: 25µg per lane.

Blocking buffer: 3% nonfat dry milk in TBST.

Detection: ECL Basic Kit (RM00020).

Exposure time: 30s.



Western blot analysis of various lysates, using [KO Validated] PSAP Rabbit pAb (A21761) at 1:1000 dilution.

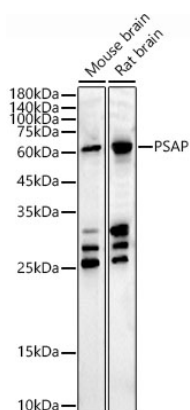
Secondary antibody: HRP-conjugated Goat anti-Rabbit IgG (H+L) (AS014) at 1:10000 dilution.

Lysates/proteins: 25µg per lane.

Blocking buffer: 3% nonfat dry milk in TBST.

Detection: ECL Basic Kit (RM00020).

Exposure time: 30s.



Western blot analysis of various lysates, using [KO Validated] PSAP Rabbit pAb (A21761) at 1:1000 dilution.

Secondary antibody: HRP-conjugated Goat anti-Rabbit IgG (H+L) (AS014) at 1:10000 dilution.

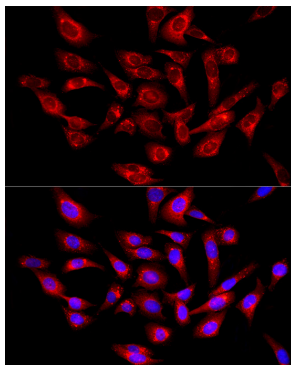
Lysates/proteins: 25µg per lane.

Blocking buffer: 3% nonfat dry milk in TBST.

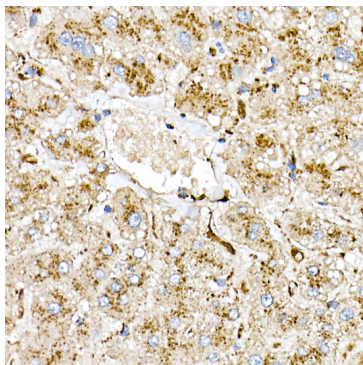
Detection: ECL Basic Kit (RM00020).

Exposure time: 60s.

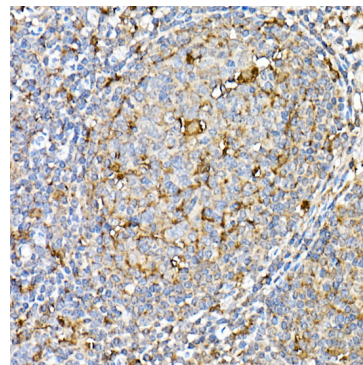
## Validation Data



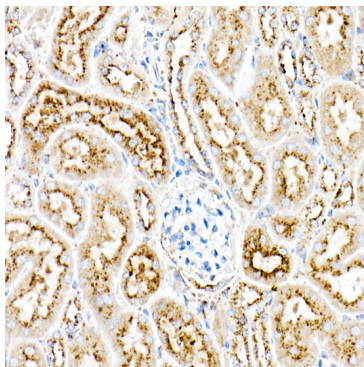
Immunofluorescence analysis of U2OS cells using PSAP Rabbit pAb (A21761) at dilution of 1:100 (40x lens). Secondary antibody: Cy3-conjugated Goat anti-Rabbit IgG (H+L) (AS007) at 1:500 dilution. Blue: DAPI for nuclear staining.



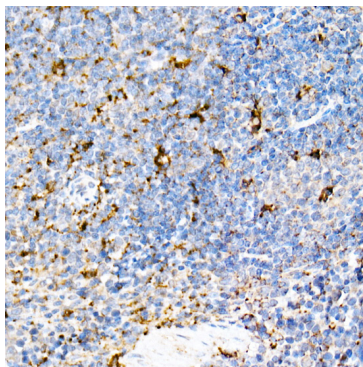
Immunohistochemistry analysis of paraffin-embedded Human liver using [KO Validated] PSAP Rabbit pAb (A21761) at dilution of 1:50 (40x lens). High pressure antigen retrieval performed with 0.01M Citrate buffer (pH 6.0) prior to IHC staining.



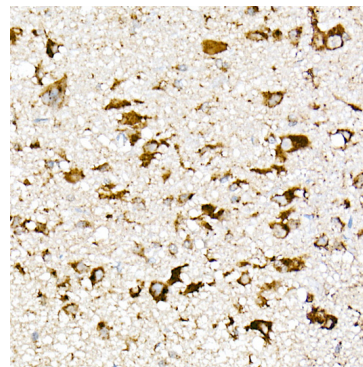
Immunohistochemistry analysis of paraffin-embedded Human tonsil using [KO Validated] PSAP Rabbit pAb (A21761) at dilution of 1:50 (40x lens). High pressure antigen retrieval performed with 0.01M Citrate buffer (pH 6.0) prior to IHC staining.



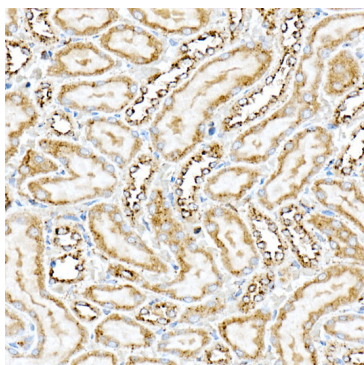
Immunohistochemistry analysis of paraffin-embedded Mouse kidney using [KO Validated] PSAP Rabbit pAb (A21761) at dilution of 1:50 (40x lens). High pressure antigen retrieval performed with 0.01M Citrate buffer (pH 6.0) prior to IHC staining.



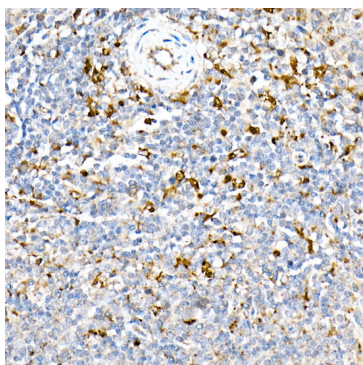
Immunohistochemistry analysis of paraffin-embedded Mouse spleen using [KO Validated] PSAP Rabbit pAb (A21761) at dilution of 1:50 (40x lens). High pressure antigen retrieval performed with 0.01M Citrate buffer (pH 6.0) prior to IHC staining.



Immunohistochemistry analysis of paraffin-embedded Rat brain using [KO Validated] PSAP Rabbit pAb (A21761) at dilution of 1:50 (40x lens). High pressure antigen retrieval performed with 0.01M Citrate buffer (pH 6.0) prior to IHC staining.



Immunohistochemistry analysis of paraffin-embedded Rat kidney using [KO Validated] PSAP Rabbit pAb (A21761) at dilution of 1:50 (40x lens). High pressure antigen retrieval performed with 0.01M Citrate buffer (pH 6.0) prior to IHC staining.



Immunohistochemistry analysis of paraffin-embedded Rat spleen using [KO Validated] PSAP Rabbit pAb (A21761) at dilution of 1:50 (40x lens). High pressure antigen retrieval performed with 0.01M Citrate buffer (pH 6.0) prior to IHC staining.