

Catalase Rabbit pAb

Catalog No.: A21688

Basic Information

Observed MW

60kDa

Calculated MW

60kDa

Category

Primary antibody

Applications

WB,IP,ELISA

Cross-Reactivity

Human, Mouse, Rat

Background

This gene encodes catalase, a key antioxidant enzyme in the bodies defense against oxidative stress. Catalase is a heme enzyme that is present in the peroxisome of nearly all aerobic cells. Catalase converts the reactive oxygen species hydrogen peroxide to water and oxygen and thereby mitigates the toxic effects of hydrogen peroxide. Oxidative stress is hypothesized to play a role in the development of many chronic or late-onset diseases such as diabetes, asthma, Alzheimer's disease, systemic lupus erythematosus, rheumatoid arthritis, and cancers. Polymorphisms in this gene have been associated with decreases in catalase activity but, to date, acatalasemia is the only disease known to be caused by this gene.

Recommended Dilutions

IP 0.5µg-4µg antibody for
200µg-400µg extracts of
whole cells

ELISA Recommended starting
concentration is 1 µg/mL.
Please optimize the
concentration based on
your specific assay
requirements.

Immunogen Information

Gene ID

847

Swiss Prot

P04040

Immunogen

Recombinant fusion protein containing a sequence corresponding to amino acids 1-225 of human Catalase (NP_001743.1).

Synonyms

CAT; catalase; Catalase

Contact

☎ | 400-999-6126

✉ | cn.market@abclonal.com.cn

🌐 | www.abclonal.com.cn

Product Information

Source

Rabbit

Isotype

IgG

Purification

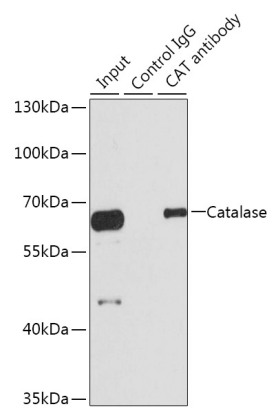
Affinity purification

Storage

Store at -20°C. Avoid freeze / thaw cycles.

Buffer: PBS with 0.01% thimerosal, 50% glycerol, pH7.3.

Validation Data



Immunoprecipitation analysis of 100 µg extracts of HepG2 cells using 3 µg Catalasealase antibody (A21688). Western blot was performed from the immunoprecipitate using Catalasealase antibody (A21688) at a dilution of 1:1000.