

LRRK1 Rabbit pAb

Catalog No.: A21659

Basic Information

Observed MW

250kDa

Calculated MW

225kDa

Category

Primary antibody

Applications

WB, ELISA

Cross-Reactivity

Human

Background

This gene encodes a multi-domain protein that is a leucine-rich repeat kinase and a GDP/GTP binding protein. The encoded protein is thought to play a role in the regulation of bone mass. Mice lacking a similar gene showed severe osteopetrosis, increased bone mineralization and decreased bone resorption.

Recommended Dilutions

WB 1:500 - 1:1000

ELISA Recommended starting concentration is 1 µg/mL. Please optimize the concentration based on your specific assay requirements.

Immunogen Information

Gene ID

79705

Swiss Prot

Q38SD2

Immunogen

Recombinant protein (or fragment). This information is considered to be commercially sensitive.

Synonyms

OSMD; RIPK6; Roco1; LRRK1

Contact

☎ | 400-999-6126

✉ | cn.market@abclonal.com.cn

🌐 | www.abclonal.com.cn

Product Information

Source

Rabbit

Isotype

IgG

Purification

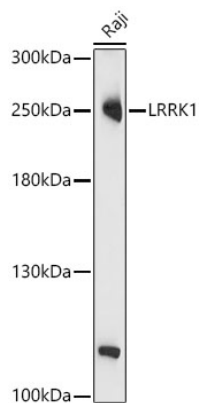
Affinity purification

Storage

Store at -20°C. Avoid freeze / thaw cycles.

Buffer: PBS with 0.01% thimerosal, 50% glycerol, pH7.3.

Validation Data



Western blot analysis of lysates from Raji cells using LRRK1 Rabbit pAb (A21659) at 1:1000 dilution.
Secondary antibody: HRP-conjugated Goat anti-Rabbit IgG (H+L) (AS014) at 1:10000 dilution.
Lysates/proteins: 25 µg per lane.
Blocking buffer: 3% nonfat dry milk in TBST.
Detection: ECL Basic Kit (RM00020).
Exposure time: 60s.