

LAMTOR1 Rabbit pAb

Catalog No.: A21557 **1 Publications**

Basic Information

Observed MW

Refer to figures

Calculated MW

18kDa

Category

Primary antibody

Applications

WB,IF/ICC,ELISA

Cross-Reactivity

Human, Mouse

Background

Enables GTPase binding activity. Contributes to guanyl-nucleotide exchange factor activity and molecular adaptor activity. Involved in several processes, including cholesterol homeostasis; positive regulation of TOR signaling; and regulation of cholesterol transport. Located in lysosome. Part of Ragulator complex.

Recommended Dilutions

WB 1:500 - 1:2000

IF/ICC 1:50 - 1:200

ELISA Recommended starting concentration is 1 µg/mL. Please optimize the concentration based on your specific assay requirements.

Immunogen Information

Gene ID

55004

Swiss Prot

Q6IAA8

Immunogen

Recombinant fusion protein containing a sequence corresponding to amino acids 1-161 of human LAMTOR1 (NP_060377.1).

Synonyms

p18; PDRO; C11orf59; p27RF-Rho; Ragulator1; LAMTOR1

Contact

☎ | 400-999-6126

✉ | cn.market@abclonal.com.cn

🌐 | www.abclonal.com.cn

Product Information

Source

Rabbit

Isotype

IgG

Purification

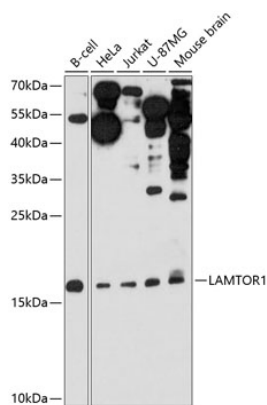
Affinity purification

Storage

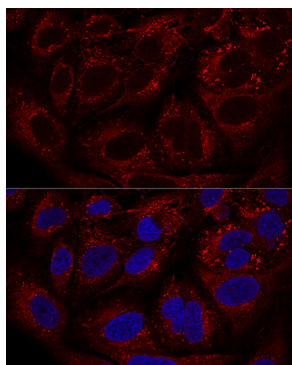
Store at -20°C. Avoid freeze / thaw cycles.

Buffer: PBS with 0.01% thimerosal, 50% glycerol, pH7.3.

Validation Data



Western blot analysis of various lysates using LAMTOR1 Rabbit pAb (A21557) at 1:3000 dilution.
Secondary antibody: HRP-conjugated Goat anti-Rabbit IgG (H+L) (AS014) at 1:10000 dilution.
Lysates/proteins: 25µg per lane.
Blocking buffer: 3% nonfat dry milk in TBST.
Detection: ECL Enhanced Kit (RM00021).
Exposure time: 90s.



Confocal immunofluorescence analysis of U2OS cells using LAMTOR1 Rabbit pAb (A21557) at dilution of 1:100. Blue: DAPI for nuclear staining.