

PIWIL1 Rabbit pAb

Catalog No.: A2150 **7 Publications**

Basic Information

Observed MW

90kDa

Calculated MW

99kDa

Category

Primary antibody

Applications

WB,IF-P,IHC-P,ELISA

Cross-Reactivity

Human, Mouse, Rat

Background

Enables several functions, including RNA binding activity; mRNA cap binding complex binding activity; and polysome binding activity. Involved in negative regulation of transposition; piRNA metabolic process; and spermatogenesis, exchange of chromosomal proteins. Located in chromatoid body; dense body; and nucleus. Is expressed in genitourinary system. Orthologous to human PIWIL1 (piwi like RNA-mediated gene silencing 1).

Recommended Dilutions

WB 1:500 - 1:1000

IF-P 1:50 - 1:200

IHC-P 1:50 - 1:200

ELISA Recommended starting concentration is 1 µg/mL. Please optimize the concentration based on your specific assay requirements.

Immunogen Information

Gene ID

57749

Swiss Prot

Q9JMB7

Immunogen

Recombinant protein (or fragment). This information is considered to be commercially sensitive.

Synonyms

MIWI; PIWIL1

Contact

☎ | 400-999-6126

✉ | cn.market@abclonal.com.cn

🌐 | www.abclonal.com.cn

Product Information

Source

Rabbit

Isotype

IgG

Purification

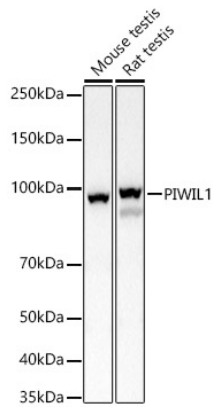
Affinity purification

Storage

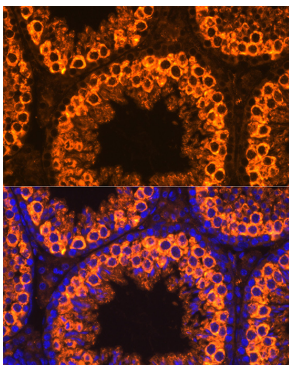
Store at -20°C. Avoid freeze / thaw cycles.

Buffer: PBS containing 50% glycerol, preserved with proclin300 or sodium azide (as specified on the Certificate of Analysis), pH 7.3.

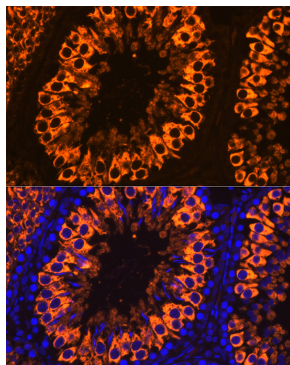
Validation Data



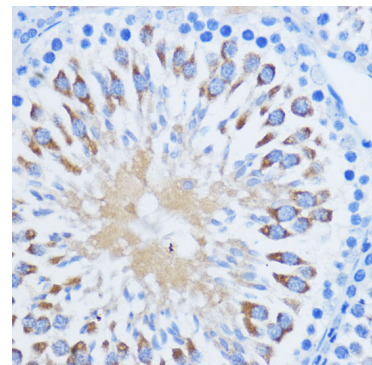
Western blot analysis of various lysates, using PIWIL1 Rabbit pAb (A2150) at 1:500 dilution.
Secondary antibody: HRP-conjugated Goat anti-Rabbit IgG (H+L) (AS014) at 1:10000 dilution.
Lysates/proteins: 25µg per lane.
Blocking buffer: 3% nonfat dry milk in TBST.
Detection: ECL Basic Kit (RM00020).
Exposure time: 1s.



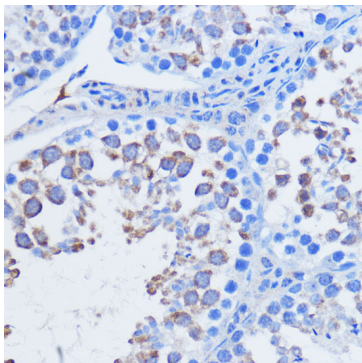
Immunofluorescence analysis of paraffin-embedded Mouse testis using PIWIL1 Rabbit pAb (A2150) at dilution of 1:100. Secondary antibody: Cy3-conjugated Goat anti-Rabbit IgG (H+L) (AS007) at 1:500 dilution. Blue: DAPI for nuclear staining.



Immunofluorescence analysis of paraffin-embedded Rat testis using PIWIL1 Rabbit pAb (A2150) at dilution of 1:100. Secondary antibody: Cy3-conjugated Goat anti-Rabbit IgG (H+L) (AS007) at 1:500 dilution. Blue: DAPI for nuclear staining.



Immunohistochemistry analysis of paraffin-embedded Rat testis using PIWIL1 Rabbit pAb (A2150) at dilution of 1:100 (40x lens). Microwave antigen retrieval performed with 0.01M PBS Buffer (pH 7.2) prior to IHC staining.



Immunohistochemistry analysis of paraffin-embedded Mouse testis using PIWIL1 Rabbit pAb (A2150) at dilution of 1:100 (40x lens). Microwave antigen retrieval performed with 0.01M PBS Buffer (pH 7.2) prior to IHC staining.