

# Cullin 1 Rabbit pAb

Catalog No.: A2136

3 Publications

## Basic Information

### Observed MW

80kDa

### Calculated MW

90kDa

### Category

Primary antibody

### Applications

WB, IHC-P, IF/ICC, ELISA

### Cross-Reactivity

Human, Mouse, Rat

## Background

Predicted to enable ubiquitin protein ligase binding activity and ubiquitin-protein transferase activity. Involved in SCF-dependent proteasomal ubiquitin-dependent protein catabolic process and protein ubiquitination. Located in plasma membrane. Part of Parkin-FBXW7-Cul1 ubiquitin ligase complex and SCF ubiquitin ligase complex.

## Recommended Dilutions

**WB** 1:500 - 1:1000

**IHC-P** 1:50 - 1:200

**IF/ICC** 1:10 - 1:100

**ELISA** Recommended starting concentration is 1 µg/mL. Please optimize the concentration based on your specific assay requirements.

## Immunogen Information

### Gene ID

8454

### Swiss Prot

Q13616

### Immunogen

Recombinant fusion protein containing a sequence corresponding to amino acids 435-593 of human Cullin 1 (NP\_003583.2).

### Synonyms

Cullin 1; CUL1; cullin-1; MGC149834; MGC149835

## Contact

☎ | 400-999-6126

✉ | [cn.market@abclonal.com.cn](mailto:cn.market@abclonal.com.cn)

🌐 | [www.abclonal.com.cn](http://www.abclonal.com.cn)

## Product Information

### Source

Rabbit

### Isotype

IgG

### Purification

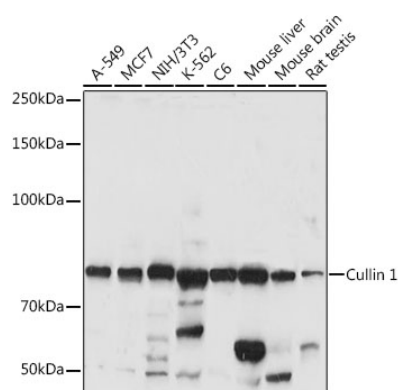
Affinity purification

### Storage

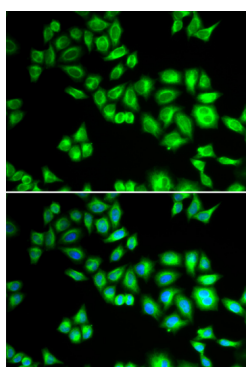
Store at -20°C. Avoid freeze / thaw cycles.

Buffer: PBS with 0.02% sodium azide, 50% glycerol, pH 7.3.

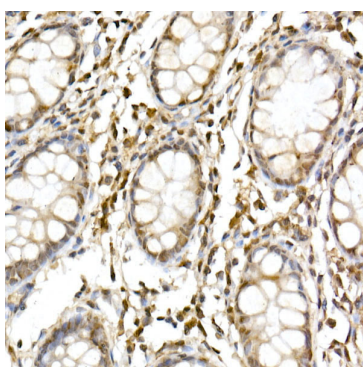
## Validation Data



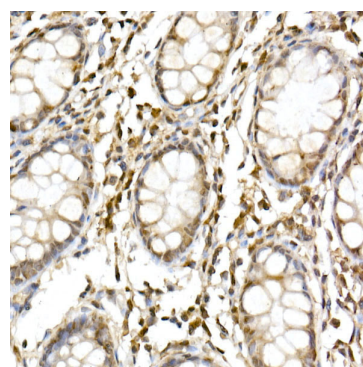
Western blot analysis of various lysates using Cullin 1 Rabbit pAb (A2136) at 1:1000 dilution. Secondary antibody: HRP-conjugated Goat anti-Rabbit IgG (H+L) (AS014) at 1:10000 dilution. Lysates/proteins: 25µg per lane. Blocking buffer: 3% nonfat dry milk in TBST. Detection: ECL Basic Kit (RM00020). Exposure time: 10s.



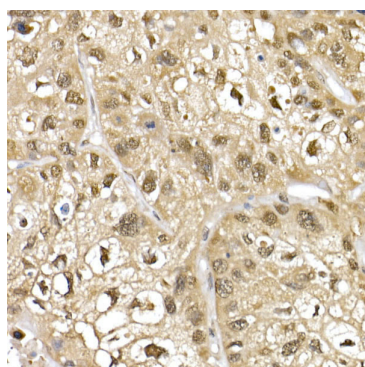
Immunofluorescence analysis of HeLa cells using Cullin 1 Rabbit pAb (A2136). Secondary antibody: Cy3-conjugated Goat anti-Rabbit IgG (H+L) (AS007) at 1:500 dilution. Blue: DAPI for nuclear staining.



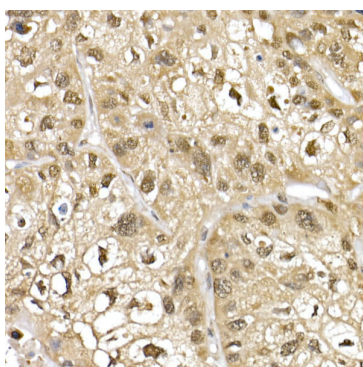
Immunohistochemistry analysis of paraffin-embedded Human colon using Cullin 1 Rabbit pAb (A2136) at dilution of 1:50 (40x lens). High pressure antigen retrieval performed with 0.01M Citrate Bufferr (pH 6.0) prior to IHC staining.



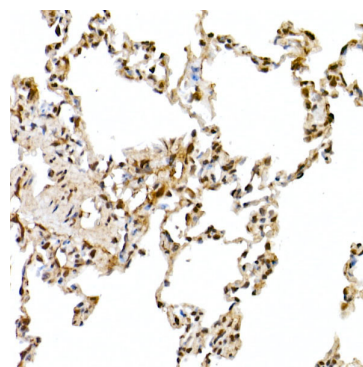
Immunohistochemistry analysis of paraffin-embedded Human colon using Cullin 1 Rabbit pAb (A2136) at dilution of 1:50 (40x lens). High pressure antigen retrieval performed with 0.01M Citrate Bufferr (pH 6.0) prior to IHC staining.



Immunohistochemistry analysis of paraffin-embedded Human lung cancer using Cullin 1 Rabbit pAb (A2136) at dilution of 1:50 (40x lens). High pressure antigen retrieval performed with 0.01M Citrate Bufferr (pH 6.0) prior to IHC staining.



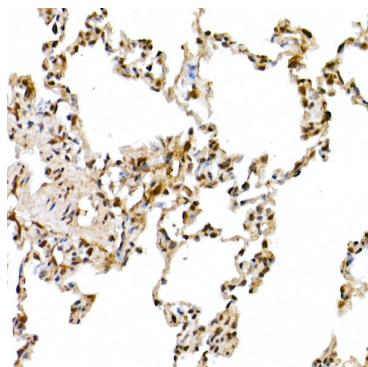
Immunohistochemistry analysis of paraffin-embedded Human lung cancer using Cullin 1 Rabbit pAb (A2136) at dilution of 1:50 (40x lens). High pressure antigen retrieval performed with 0.01M Citrate Bufferr (pH 6.0) prior to IHC staining.



Immunohistochemistry analysis of paraffin-embedded Rat lung using Cullin 1 Rabbit pAb (A2136) at dilution of 1:50 (40x lens). High pressure antigen retrieval performed with 0.01M Citrate Bufferr (pH 6.0) prior to IHC staining.

## Validation Data

---



Immunohistochemistry analysis of paraffin-embedded Rat lung using Cullin 1 Rabbit pAb (A2136) at dilution of 1:50 (40x lens). High pressure antigen retrieval performed with 0.01M Citrate Bufferr (pH 6.0) prior to IHC staining.