

[KO Validated] STRAP Rabbit pAb

Catalog No.: A21351 **KO** Validated

Basic Information

Observed MW

39kDa

Calculated MW

38kDa

Category

Primary antibody

Applications

WB,IF/ICC,IP,ELISA

Cross-Reactivity

Human, Mouse, Rat

Background

Enables RNA binding activity. Involved in maintenance of gastrointestinal epithelium; negative regulation of transforming growth factor beta receptor signaling pathway; and spliceosomal snRNP assembly. Located in cytosol. Part of SMN complex. Implicated in adenocarcinoma; colorectal carcinoma; large cell carcinoma; lung carcinoma; and squamous cell neoplasm.

Recommended Dilutions

WB 1:500 - 1:2000

IF/ICC 1:50 - 1:200

IP 0.5µg-4µg antibody for
200µg-400µg extracts of
whole cells

ELISA Recommended starting
concentration is 1 µg/mL.
Please optimize the
concentration based on
your specific assay
requirements.

Immunogen Information

Gene ID

11171

Swiss Prot

Q9Y3F4

Immunogen

Recombinant protein (or fragment). This information is considered to be commercially sensitive.

Synonyms

MAWD; PT-WD; UNRIP; AP

Contact

☎ | 400-999-6126

✉ | cn.market@abclonal.com.cn

🌐 | www.abclonal.com.cn

Product Information

Source

Rabbit

Isotype

IgG

Purification

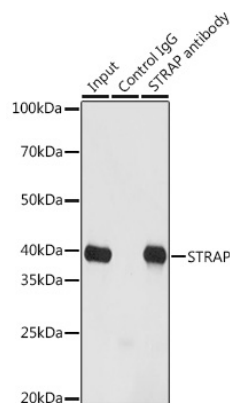
Affinity purification

Storage

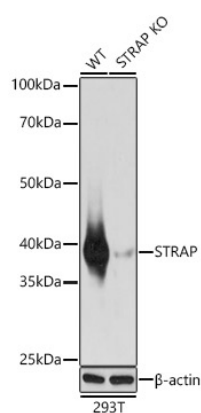
Store at -20°C. Avoid freeze / thaw cycles.

Buffer: PBS containing 50% glycerol, preserved with proclin300 or sodium azide (as specified on the Certificate of Analysis), pH 7.3.

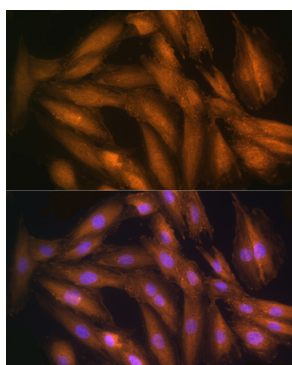
Validation Data



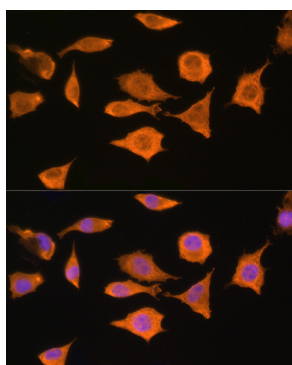
Immunoprecipitation analysis of 200 µg extracts of HeLa cells using 3 µg STRAP antibody (A21351). Western blot was performed from the immunoprecipitate using STRAP antibody (A21351) at a dilution of 1:1000.



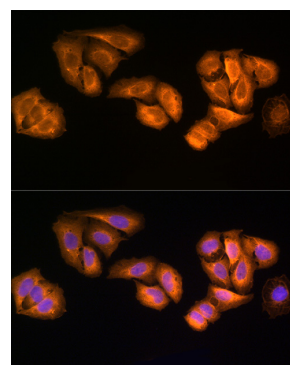
Western blot analysis of lysates from wild type (WT) and STRAP knockout (KO) HeLa cells, using STRAP Rabbit pAb (A21351) at 1:1000 dilution.
Secondary antibody: HRP-conjugated Goat anti-Rabbit IgG (H+L) (AS014) at 1:10000 dilution.
Lysates/proteins: 25 µg per lane.
Blocking buffer: 3% nonfat dry milk in TBST.
Detection: ECL Basic Kit (RM00020).
Exposure time: 1s.



Immunofluorescence analysis of H9C2 cells using STRAP Rabbit pAb (A21351) at dilution of 100 (40x lens). Secondary antibody: Cy3-conjugated Goat anti-Rabbit IgG (H+L) (AS007) at 1:500 dilution. Blue: DAPI for nuclear staining.



Immunofluorescence analysis of L929 cells using STRAP Rabbit pAb (A21351) at dilution of 100 (40x lens). Secondary antibody: Cy3-conjugated Goat anti-Rabbit IgG (H+L) (AS007) at 1:500 dilution. Blue: DAPI for nuclear staining.



Immunofluorescence analysis of U2OS cells using STRAP Rabbit pAb (A21351) at dilution of 100 (40x lens). Secondary antibody: Cy3-conjugated Goat anti-Rabbit IgG (H+L) (AS007) at 1:500 dilution. Blue: DAPI for nuclear staining.