

HMG20B Rabbit pAb

Catalog No.: A21330

Basic Information

Observed MW

Refer to figures

Calculated MW

36kDa

Category

Primary antibody

Applications

WB, ELISA

Cross-Reactivity

Human, Mouse

Background

Predicted to enable DNA binding activity. Predicted to be involved in regulation of gene expression. Predicted to act upstream of or within negative regulation of protein sumoylation; positive regulation of neuron differentiation; and skeletal muscle cell differentiation. Located in nuclear body.

Recommended Dilutions

WB 1:500 - 1:2000

ELISA Recommended starting concentration is 1 µg/mL. Please optimize the concentration based on your specific assay requirements.

Immunogen Information

Gene ID

10362

Swiss Prot

Q9P0W2

Immunogen

Recombinant protein (or fragment). This information is considered to be commercially sensitive.

Synonyms

SOXL; HMGX2; BRAF25; BRAF35; HMGXB2; PP7706; pp8857; SMARCE1r; HMG20B

Contact

☎ | 400-999-6126

✉ | cn.market@abclonal.com.cn

🌐 | www.abclonal.com.cn

Product Information

Source

Rabbit

Isotype

IgG

Purification

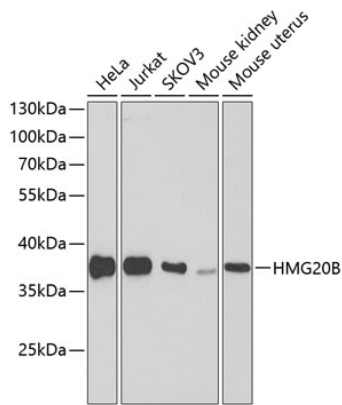
Affinity purification

Storage

Store at -20°C. Avoid freeze / thaw cycles.

Buffer: PBS containing 50% glycerol, preserved with proclin300 or sodium azide (as specified on the Certificate of Analysis), pH 7.3.

Validation Data



Western blot analysis of various lysates using HMG20B Rabbit pAb (A21330) at 1:1000 dilution. Secondary antibody: HRP-conjugated Goat anti-Rabbit IgG (H+L) (AS014) at 1:10000 dilution. Lysates/proteins: 25µg per lane. Blocking buffer: 3% nonfat dry milk in TBST. Detection: ECL Basic Kit (RM00020). Exposure time: 90s.