

TIFY11B Rabbit pAb

Catalog No.: A21305

Basic Information

Observed MW

25kDa

Calculated MW

30kDa

Category

Primary antibody

Applications

WB, ELISA

Cross-Reactivity

Arabidopsis thaliana

Background

JAZ6 transcript levels rise in response to a jasmonate stimulus and a GFP:JAZ6 fusion protein localizes to the nucleus. Application of jasmonate methyl ester to Arabidopsis roots reduces the levels of a JAZ6:GUS fusion protein, presumably by stimulating ubiquitin-proteasome-mediated degradation.

Recommended Dilutions

WB 1:100 - 1:500

ELISA Recommended starting concentration is 1 µg/mL. Please optimize the concentration based on your specific assay requirements.

Immunogen Information

Gene ID

843577

Swiss Prot

Q9C9E3

Immunogen

Synthetic peptide. This information is considered to be commercially sensitive.

Synonyms

jasmonate-zim-domain protein 6; T10D10.8; T10D10_8; TIFY DOMAIN PROTEIN 11B; TIFY11B

Contact

☎ | 400-999-6126

✉ | cn.market@abclonal.com.cn

🌐 | www.abclonal.com.cn

Product Information

Source

Rabbit

Isotype

IgG

Purification

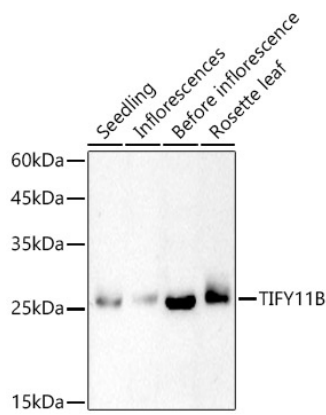
Affinity purification

Storage

Store at -20°C. Avoid freeze / thaw cycles.

Buffer: PBS containing 50% glycerol, preserved with proclin300 or sodium azide (as specified on the Certificate of Analysis), pH 7.3.

Validation Data



Western blot analysis of extracts of various tissues from *Arabidopsis thaliana*, using TIFY11B Rabbit pAb (A21305) at 1:500 dilution.
Secondary antibody: HRP-conjugated Goat anti-Rabbit IgG (H+L) (AS014) at 1:10000 dilution.
Lysates/proteins: 25µg per lane.
Blocking buffer: 3% nonfat dry milk in TBST.
Detection: ECL Basic Kit (RM00020).
Exposure time: 180s.