

# BAK1 Rabbit pAb

Catalog No.: A21283

## Basic Information

### Observed MW

### Calculated MW

68kDa

### Category

Primary antibody

### Applications

WB, ELISA

### Cross-Reactivity

Arabidopsis thaliana

## Background

Leu-rich receptor Serine/threonine protein kinase. Component of BR signaling that interacts with BRI1 in vitro and in vivo to form a heterodimer. Brassinolide-dependent association of BRI1 and BAK1 in vivo. Phosphorylation of both BRI1 and BAK1 on Thr residues was BR dependent. Although BAK1 and BRI1 alone localize in the plasma membrane, when BAK1 and BRI1 are coexpressed, the heterodimer BAK1/BRI1 they form is localized in the endosome.

## Recommended Dilutions

**WB** 1:500 - 1:1000

**ELISA** Recommended starting concentration is 1 µg/mL. Please optimize the concentration based on your specific assay requirements.

## Immunogen Information

### Gene ID

829480

### Swiss Prot

Q94F62

### Immunogen

Synthetic peptide. This information is considered to be commercially sensitive.

### Synonyms

ATBAK1; ATSERK3; BRI1-associated receptor kinase; ELG; ELONGATED; F17M5.190; F17M5\_190; RECEPTOR KINASES LIKE SERK 10; RKS10; SERK3; SOMATIC EMBRYOGENESIS RECEPTOR-LIKE KINASE 3; BAK1

## Contact

☎ | 400-999-6126

✉ | [cn.market@abclonal.com.cn](mailto:cn.market@abclonal.com.cn)

🌐 | [www.abclonal.com.cn](http://www.abclonal.com.cn)

## Product Information

### Source

Rabbit

### Isotype

IgG

### Purification

Affinity purification

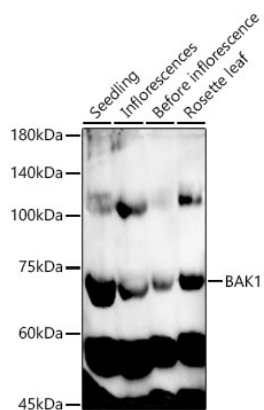
### Storage

Store at -20°C. Avoid freeze / thaw cycles.

Buffer: PBS with 0.05% proclin300, 50% glycerol, pH7.3.

## Validation Data

---



Western blot analysis of extracts of various tissues from *Arabidopsis thaliana*, using BAK1 Rabbit pAb (A21283) at 1:1000 dilution.

Secondary antibody: HRP-conjugated Goat anti-Rabbit IgG (H+L) (AS014) at 1:10000 dilution.

Lysates/proteins: 25µg per lane.

Blocking buffer: 3% nonfat dry milk in TBST.

Detection: ECL Enhanced Kit (RM00021).

Exposure time: 90s.