

SnRK2.3 Rabbit pAb

Catalog No.: A21281

Basic Information

Observed MW

41kDa

Calculated MW

41kDa

Category

Primary antibody

Applications

WB, ELISA

Cross-Reactivity

Arabidopsis thaliana

Background

encodes a member of SNF1-related protein kinases (SnRK2) whose activity is activated by ionic (salt) and non-ionic (mannitol) osmotic stress. Enzyme involved in the ABA signaling during seed germination, dormancy and seedling growth.

Recommended Dilutions

WB 1:500 - 1:1000

ELISA Recommended starting concentration is 1 µg/mL. Please optimize the concentration based on your specific assay requirements.

Immunogen Information

Gene ID

836822

Swiss Prot

Q39193

Immunogen

A synthetic peptide corresponding to a sequence within amino acids 200-300 of arabidopsis thaliana SnRK2.3 (NP_201489.1).

Synonyms

SNRK2-3; SRK2I; SUCROSE NONFERMENTING 1 (SNF1)-RELATED PROTEIN KINASE 2-3; sucrose nonfermenting 1(SNF1)-related protein kinase 2.3; SnRK2.3

Contact

 | 400-999-6126

 | cn.market@abclonal.com.cn

 | www.abclonal.com.cn

Product Information

Source

Rabbit

Isotype

IgG

Purification

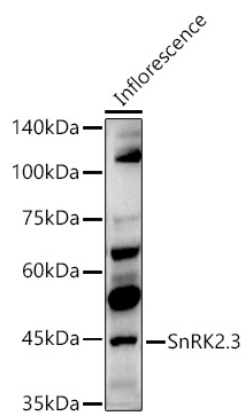
Affinity purification

Storage

Store at -20°C. Avoid freeze / thaw cycles.

Buffer: PBS with 0.05% proclin300, 50% glycerol, pH7.3.

Validation Data



Western blot analysis of lysates from Inflorescence, using SnRK2.3 Rabbit pAb (A21281) at 1:1000 dilution.

Secondary antibody: HRP-conjugated Goat anti-Rabbit IgG (H+L) (AS014) at 1:10000 dilution.

Lysates/proteins: 25µg per lane.

Blocking buffer: 3% nonfat dry milk in TBST.

Detection: ECL Enhanced Kit (RM00021).

Exposure time: 60s.