

# BRI1 Rabbit pAb

**Catalog No.: A21279**

## Basic Information

**Observed MW**

131kDa

**Calculated MW**

131kDa

**Category**

Primary antibody

**Applications**

WB, ELISA

**Cross-Reactivity**

Arabidopsis thaliana

## Background

Encodes a plasma membrane localized leucine-rich repeat receptor kinase involved in brassinosteroid signal transduction. BRI1 ligand is brassinolide which binds at the extracellular domain. Binding results in phosphorylation of the kinase domain which activates the BRI1 protein leading to BR responses. Residue T-1049 and either S-1044 or T-1045 were essential for kinase function in vitro and normal BRI1 signaling in planta. The structure of BRI1 ligand-binding domain has been determined at 2.5Å resolution. Although BAK1 and BRI1 alone localize in the plasma membrane, when BAK1 and BRI1 are coexpressed, the heterodimer BAK1/BRI1 they form is localized in the endosome. BRI1 appears to be involved in the autonomous pathway that regulates the transition to flowering, primarily through its effects on FLC expression levels, as uncovered by double mutant analyses. This most likely occurs as a result of BRI1-dependent effects on histone acetylation, but not histone triMeH3K4 methylation, at the FLC locus.

## Recommended Dilutions

**WB** 1:100 - 1:500**ELISA** Recommended starting concentration is 1 µg/mL. Please optimize the concentration based on your specific assay requirements.

## Immunogen Information

**Gene ID**

830095

**Swiss Prot**

O22476

**Immunogen**

Recombinant protein (or fragment). This information is considered to be commercially sensitive.

**Synonyms**

ATBRI1; BIN1; BR INSENSITIVE 1; BRASSINOSTEROID INSENSITIVE 1; CABBAGE 2; CBB2; DWARF 2; DWF2; F23K16.30; F23K16\_30; BRI1

## Contact

 | 400-999-6126 | [cn.market@abclonal.com.cn](mailto:cn.market@abclonal.com.cn) | [www.abclonal.com.cn](http://www.abclonal.com.cn)

## Product Information

**Source**

Rabbit

**Isotype**

IgG

**Purification**

Affinity purification

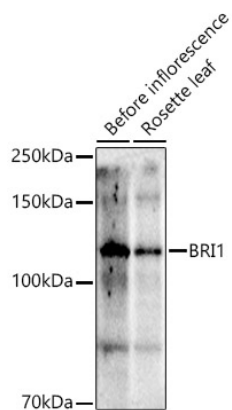
**Storage**

Store at -20°C. Avoid freeze / thaw cycles.

Buffer: PBS with 0.05% proclin300, 50% glycerol, pH7.3.

## Validation Data

---



Western blot analysis of extracts of various tissues from *Arabidopsis thaliana*, using BRI1 Rabbit pAb (A21279) at 1:500 dilution.

Secondary antibody: HRP-conjugated Goat anti-Rabbit IgG (H+L) (AS014) at 1:10000 dilution.

Lysates/proteins: 25µg per lane.

Blocking buffer: 3% nonfat dry milk in TBST.

Detection: ECL Basic Kit (RM00020).

Exposure time: 90s.