

# BSU1 Rabbit pAb

Catalog No.: A21273

## Basic Information

### Observed MW

88kDa

### Calculated MW

88kDa

### Category

Primary antibody

### Applications

WB, ELISA

### Cross-Reactivity

Arabidopsis thaliana

## Background

encodes a serine/threonine protein phosphatase with an N-terminal Kelch-repeat domain, which is nuclear localized and expressed preferentially in elongating cells. Genetic evidence suggest that this gene plays a redundant role (along with other members of the same gene family) in modulating growth in response to brassinosteroid.

## Recommended Dilutions

**WB** 1:500 - 1:1000

**ELISA** Recommended starting concentration is 1 µg/mL. Please optimize the concentration based on your specific assay requirements.

## Immunogen Information

### Gene ID

838804

### Swiss Prot

Q9LR78

### Immunogen

Synthetic peptide. This information is considered to be commercially sensitive.

### Synonyms

BRI1 SUPPRESSOR 1; F21B7.7; BSU1

## Contact

 | 400-999-6126

 | [cn.market@abclonal.com.cn](mailto:cn.market@abclonal.com.cn)

 | [www.abclonal.com.cn](http://www.abclonal.com.cn)

## Product Information

### Source

Rabbit

### Isotype

IgG

### Purification

Affinity purification

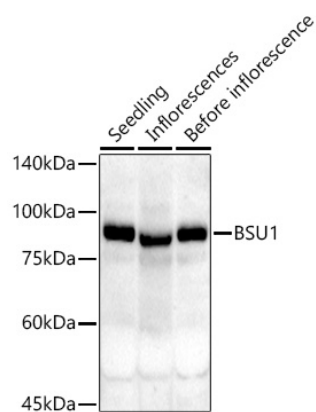
### Storage

Store at -20°C. Avoid freeze / thaw cycles.

Buffer: PBS containing 50% glycerol, preserved with proclin300 or sodium azide (as specified on the Certificate of Analysis), pH 7.3.

## Validation Data

---



Western blot analysis of extracts of various tissues from *Arabidopsis thaliana*, using BSU1 Rabbit pAb (A21273) at 1:1000 dilution.

Secondary antibody: HRP-conjugated Goat anti-Rabbit IgG (H+L) (AS014) at 1:10000 dilution.

Lysates/proteins: 25µg per lane.

Blocking buffer: 3% nonfat dry milk in TBST.

Detection: ECL Basic Kit (RM00020).

Exposure time: 90s.