

CD30 Rabbit mAb

Catalog No.: A21230 **Recombinant**

Basic Information

Observed MW

Refer to figures

Calculated MW

14kDa/50kDa/63kDa

Category

Primary antibody

Applications

WB, IHC-P, IF/ICC, FC, ELISA

Cross-Reactivity

Human

CloneNo number

ARC52949

Background

The protein encoded by this gene is a member of the TNF-receptor superfamily. This receptor is expressed by activated, but not by resting, T and B cells. TRAF2 and TRAF5 can interact with this receptor, and mediate the signal transduction that leads to the activation of NF-kappaB. This receptor is a positive regulator of apoptosis, and also has been shown to limit the proliferative potential of autoreactive CD8 effector T cells and protect the body against autoimmunity. Two alternatively spliced transcript variants of this gene encoding distinct isoforms have been reported.

Recommended Dilutions

WB 1:5500-1:11000**IHC-P** 1:100 - 1:500**IF/ICC** 1:50 - 1:200**FC** 1:100 - 1:500

ELISA Recommended starting concentration is 1 µg/mL. Please optimize the concentration based on your specific assay requirements.

Immunogen Information

Gene ID

943

Swiss Prot

P28908


Immunogen

Recombinant protein (or fragment). This information is considered to be commercially sensitive.

Synonyms

CD30; Ki-1; D1S166E

Contact

 | 400-999-6126 | cn.market@abclonal.com.cn | www.abclonal.com.cn

Product Information

Source

Rabbit

Isotype

IgG

Purification

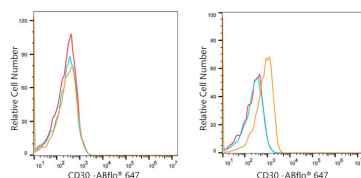
Affinity purification

Storage

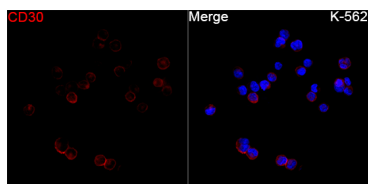
Store at -20°C. Avoid freeze / thaw cycles.

Buffer: PBS with 0.05% proclin300, 0.05% BSA, 50% glycerol, pH7.3.

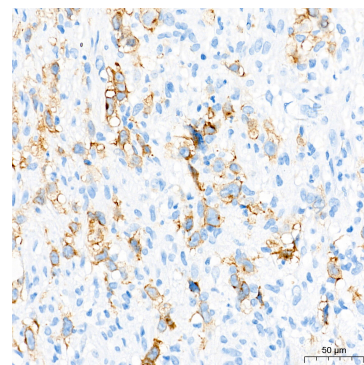
Validation Data



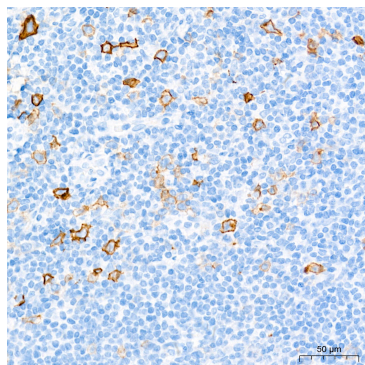
Flow cytometry: 1×10^6 A549 cells (negative control, left) and K-562 cells (right) were surface-stained with CD30 Rabbit mAb (A21230, 2 $\mu\text{g}/\text{mL}$, orange line) or ABflo® 647 Rabbit IgG isotype control (A22070, 2 $\mu\text{g}/\text{mL}$, blue line), followed by Alexa Fluor® 647 conjugated goat anti-rabbit pAb staining. Non-fluorescently stained cells were used as blank control (red line).



Immunofluorescence analysis of K-562 cells using CD30 Rabbit mAb (A21230) at a dilution of 1:200 (40x lens). Secondary antibody: Cy3-conjugated Goat anti-Rabbit IgG (H+L) (AS007) at 1:500 dilution. Blue: DAPI for nuclear staining.



Immunohistochemistry analysis of paraffin-embedded Human Hodgkin lymphoma tissue using CD30 Rabbit mAb (A21230) at a dilution of 1:500 (40x lens). High pressure antigen retrieval performed with 0.01M Tris-EDTA Buffer (pH 9.0) prior to IHC staining.



Immunohistochemistry analysis of paraffin-embedded Human tonsil tissue using CD30 Rabbit mAb (A21230) at a dilution of 1:500 (40x lens). High pressure antigen retrieval performed with 0.01M Tris-EDTA Buffer (pH 9.0) prior to IHC staining.