

# human IgG (Fc) Mouse mAb

Catalog No.: A21215 **2 Publications**

## Basic Information

### Observed MW

Refer to figures

### Calculated MW

52kDa

### Category

Primary antibody

### Applications

IHC-P, ELISA

### Cross-Reactivity

Human

### CloneNo number

AMC0420

## Background

Predicted to enable antigen binding activity and immunoglobulin receptor binding activity. Predicted to be involved in several processes, including activation of immune response; defense response to other organism; and phagocytosis. Predicted to act upstream of or within several processes, including immunoglobulin mediated immune response; positive regulation of hypersensitivity; and positive regulation of phagocytosis. Located in extracellular space.

## Recommended Dilutions

**IHC-P** 1:50 - 1:200

**ELISA** Recommended starting concentration is 1 µg/mL. Please optimize the concentration based on your specific assay requirements.

## Immunogen Information

### Gene ID

3500

### Swiss Prot

P01857, P01859, P01860, P01861

### Immunogen

Synthetic peptide. This information is considered to be commercially sensitive.

### Synonyms

COB1; YAP; YAP2; YAP65; YKI; YAP1; human IgG (Fc)

## Contact

☎ | 400-999-6126

✉ | [cn.market@abclonal.com.cn](mailto:cn.market@abclonal.com.cn)

🌐 | [www.abclonal.com.cn](http://www.abclonal.com.cn)

## Product Information

### Source

Mouse

### Isotype

IgG1, Kappa

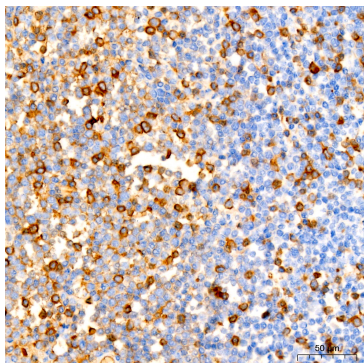
### Purification

Affinity purification

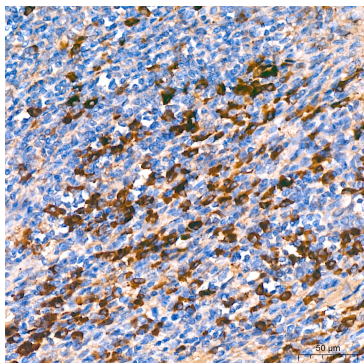
### Storage

Store at -20°C. Avoid freeze / thaw cycles.

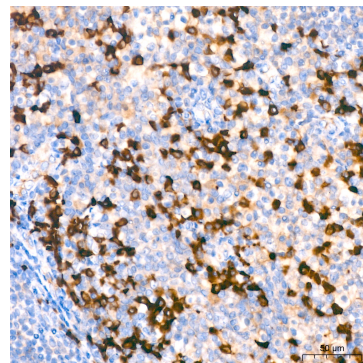
Buffer: PBS containing 50% glycerol, preserved with proclin300 or sodium azide (as specified on the Certificate of Analysis), pH 7.3.



Immunohistochemistry analysis of paraffin-embedded Human Follicular lymphoma using human IgG (Fc) Mouse mAb (A21215) at dilution of 1:200 (40x lens). High pressure antigen retrieval performed with 0.01M Tris/EDTA Buffer (pH 9.0) prior to IHC staining.



Immunohistochemistry analysis of paraffin-embedded Human mantle cell lymphoma using human IgG (Fc) Mouse mAb (A21215) at dilution of 1:200 (40x lens). High pressure antigen retrieval performed with 0.01M Tris/EDTA Buffer (pH 9.0) prior to IHC staining.



Immunohistochemistry analysis of paraffin-embedded Human tonsil using human IgG (Fc) Mouse mAb (A21215) at dilution of 1:200 (40x lens). High pressure antigen retrieval performed with 0.01M Tris/EDTA Buffer (pH 9.0) prior to IHC staining.