

CD86 Rabbit mAb

Catalog No.: A21198

Recombinant

3 Publications

Basic Information

Observed MW

60-85kDa

Calculated MW

38kDa

Category

Primary antibody

Applications

WB, IF/ICC, FC, ELISA

Cross-Reactivity

Human

CloneNo number

ARC54011

Background

This gene encodes a type I membrane protein that is a member of the immunoglobulin superfamily. This protein is expressed by antigen-presenting cells, and it is the ligand for two proteins at the cell surface of T cells, CD28 antigen and cytotoxic T-lymphocyte-associated protein 4. Binding of this protein with CD28 antigen is a costimulatory signal for activation of the T-cell. Binding of this protein with cytotoxic T-lymphocyte-associated protein 4 negatively regulates T-cell activation and diminishes the immune response. Alternative splicing results in several transcript variants encoding different isoforms.

Recommended Dilutions

WB 1:2000 - 1:4000**IF/ICC** 1:50 - 1:200**FC** 1:50 - 1:200

ELISA Recommended starting concentration is 1 µg/mL. Please optimize the concentration based on your specific assay requirements.

Immunogen Information

Gene ID

942

Swiss Prot

P42081

Immunogen

Recombinant protein (or fragment). This information is considered to be commercially sensitive.

Synonyms

B70; B7-2; B7.2; LAB72; CD28LG2; CD86

Contact

 | 400-999-6126 | cn.market@abclonal.com.cn | www.abclonal.com.cn

Product Information

Source

Rabbit

Isotype

IgG

Purification

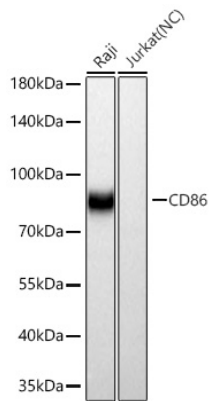
Affinity purification

Storage

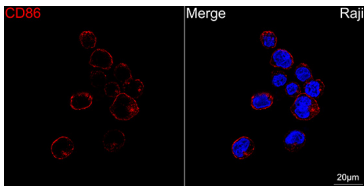
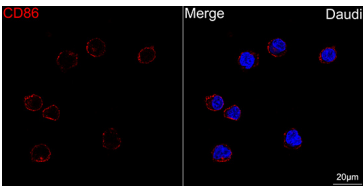
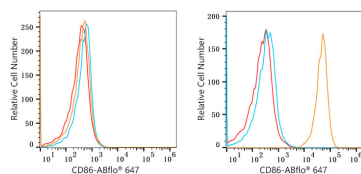
Store at -20°C. Avoid freeze / thaw cycles.

Buffer: PBS containing 50% glycerol and 0.05% BSA, preserved with proclin300 or sodium azide (as specified on the Certificate of Analysis), pH 7.3.

Validation Data



Western blot analysis of various lysates using CD86 Rabbit mAb (A21198) at 1:4000 dilution incubated at room temperature for 1.5 hours.
Secondary antibody: HRP-conjugated Goat anti-Rabbit IgG (H+L) (AS014) at 1:10000 dilution.
Lysates/proteins: 25 µg per lane.
Blocking buffer: 3% nonfat dry milk in TBST.
Detection: ECL Basic Kit (RM00020).
Negative control (NC): Jurkat
Exposure time: 90s.



Flow cytometry:1X10⁶ K-562 cells (negative control,left) and Raji cells (right) were surface-stained with CD86 Rabbit mAb(A21198, 2.5 µg/mL,orange line) or Rabbit IgG isotype control (AC042, 10 µg/mL,blue line),followed by Alexa Fluor 647 conjugated goat anti-rabbit pAb(1:600 dilution) staining. Non-fluorescently stained cells were used as blank control (red line).

Confocal imaging of Daudi cells using CD86 Rabbit mAb (A21198, dilution 1:200) followed by a further incubation with Cy3 Goat Anti-Rabbit IgG (H+L) (AS007, dilution 1:500) (Red). DAPI was used for nuclear staining (Blue). Objective: 100x.

Confocal imaging of Raji cells using CD86 Rabbit mAb (A21198, dilution 1:200) followed by a further incubation with Cy3 Goat Anti-Rabbit IgG (H+L) (AS007, dilution 1:500) (Red). DAPI was used for nuclear staining (Blue). Objective: 100x.