

Serine racemase Rabbit mAb

Catalog No.: A21158 **Recombinant** **1 Publications**

Basic Information

Observed MW

37kDa

Calculated MW

37kDa

Category

Primary antibody

Applications

WB, ELISA

Cross-Reactivity

Human

CloneNo number

ARC3047

Background

Enables several functions, including L-serine ammonia-lyase activity; PDZ domain binding activity; and anion binding activity. Involved in pyruvate biosynthetic process; response to lipopolysaccharide; and serine family amino acid metabolic process. Located in cytoplasm and neuronal cell body.

Recommended Dilutions

WB 1:500 - 1:1000

ELISA Recommended starting concentration is 1 µg/mL. Please optimize the concentration based on your specific assay requirements.

Immunogen Information

Gene ID

63826

Swiss Prot

Q9GZT4

Immunogen

Recombinant protein (or fragment). This information is considered to be commercially sensitive.

Synonyms

ILV1; ISO1; Serine racemase

Contact

☎ | 400-999-6126

✉ | cn.market@abclonal.com.cn

🌐 | www.abclonal.com.cn

Product Information

Source

Rabbit

Isotype

IgG

Purification

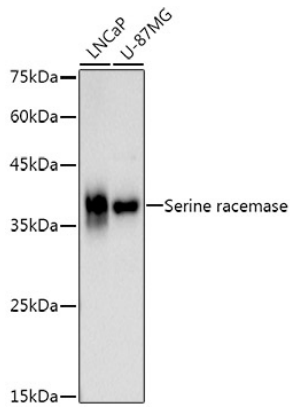
Affinity purification

Storage

Store at -20°C. Avoid freeze / thaw cycles.

Buffer: PBS containing 50% glycerol and 0.05% BSA, preserved with proclin300 or sodium azide (as specified on the Certificate of Analysis), pH 7.3.

Validation Data



Western blot analysis of various lysates using Serine racemase Rabbit mAb (A21158) at 1:1000 dilution.
Secondary antibody: HRP-conjugated Goat anti-Rabbit IgG (H+L) (AS014) at 1:10000 dilution.
Lysates/proteins: 25µg per lane.
Blocking buffer: 3% nonfat dry milk in TBST.
Detection: ECL Basic Kit (RM00020).
Exposure time: 90s.