

TAOK1 Rabbit mAb

Catalog No.: A21157 **Recombinant**

Basic Information

Observed MW

116kDa

Calculated MW

116kDa

Category

Primary antibody

Applications

WB,ELISA

Cross-Reactivity

Human, Mouse, Rat

CloneNo number

ARC3003

Background

Enables alpha-tubulin binding activity; beta-tubulin binding activity; and kinase activity. Involved in several processes, including mitotic G2 DNA damage checkpoint signaling; negative regulation of microtubule depolymerization; and positive regulation of JNK cascade. Located in microtubule cytoskeleton and perinuclear region of cytoplasm.

Recommended Dilutions

WB 1:500 - 1:1000

ELISA Recommended starting concentration is 1 µg/mL. Please optimize the concentration based on your specific assay requirements.

Immunogen Information

Gene ID

57551

Swiss Prot

Q7L7X3

Immunogen

Recombinant protein (or fragment). This information is considered to be commercially sensitive.

Synonyms

DDIB; PSK2; TAO1; KFC-B; MARKK; PSK-2; hKFC-B; hTAOK1; MAP3K16; TAOK1

Contact

☎ | 400-999-6126

✉ | cn.market@abclonal.com.cn

🌐 | www.abclonal.com.cn

Product Information

Source

Rabbit

Isotype

IgG

Purification

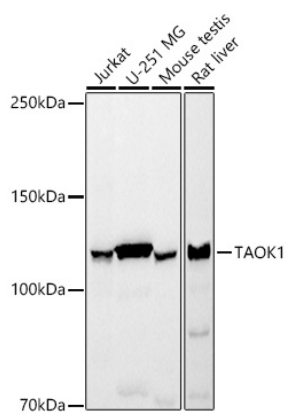
Affinity purification

Storage

Store at -20°C. Avoid freeze / thaw cycles.

Buffer: PBS with 0.02% sodium azide, 0.05% BSA, 50% glycerol, pH7.3.

Validation Data



Western blot analysis of various lysates, using TAOK1 Rabbit mAb (A21157) at 1:1000 dilution.
Secondary antibody: HRP-conjugated Goat anti-Rabbit IgG (H+L) (AS014) at 1:10000 dilution.
Lysates/proteins: 25µg per lane.
Blocking buffer: 3% nonfat dry milk in TBST.
Detection: ECL Basic Kit (RM00020).
Exposure time: 3s.