

PWP1 Rabbit mAb

Catalog No.: A21143 **Recombinant** **1 Publications**

Basic Information

Observed MW

75kDa

Calculated MW

56kDa

Category

Primary antibody

Applications

WB,ELISA

Cross-Reactivity

Human

CloneNo number

ARC3017

Background

The protein encoded by this gene contains several WD-40 repeats and is found mostly in the nucleus. The expression and localization of this protein are cell cycle dependent. Expression of this gene is upregulated in pancreatic adenocarcinoma. Three transcript variants encoding different isoforms have been found for this gene.

Recommended Dilutions

WB 1:500 - 1:1000

ELISA Recommended starting concentration is 1 µg/mL. Please optimize the concentration based on your specific assay requirements.

Immunogen Information

Gene ID

11137

Swiss Prot

Q13610

Immunogen

Recombinant protein (or fragment). This information is considered to be commercially sensitive.

Synonyms

NCLB; IEF-SSP-9502; PWP1

Contact

☎ | 400-999-6126

✉ | cn.market@abclonal.com.cn

🌐 | www.abclonal.com.cn

Product Information

Source

Rabbit

Isotype

IgG

Purification

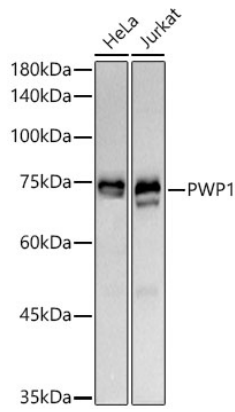
Affinity purification

Storage

Store at -20°C. Avoid freeze / thaw cycles.

Buffer: PBS containing 50% glycerol and 0.05% BSA, preserved with proclin300 or sodium azide (as specified on the Certificate of Analysis), pH 7.3.

Validation Data



Western blot analysis of various lysates using PWP1 Rabbit mAb (A21143) at 1:1000 dilution.
Secondary antibody: HRP-conjugated Goat anti-Rabbit IgG (H+L) (AS014) at 1:10000 dilution.
Lysates/proteins: 25 μ g per lane.
Blocking buffer: 3% nonfat dry milk in TBST.
Detection: ECL Basic Kit (RM00020).
Exposure time: 30s.