

MYO1B Rabbit mAb

Catalog No.: A21113 **Recombinant** **1 Publications**

Basic Information

Observed MW

132kDa

Calculated MW

132kDa

Category

Primary antibody

Applications

WB, ELISA

Cross-Reactivity

Human, Mouse, Rat

CloneNo number

ARC2990

Background

Enables ATP binding activity; actin filament binding activity; and microfilament motor activity. Involved in actin filament organization and post-Golgi vesicle-mediated transport. Located in several cellular components, including actin filament; endosome; and perinuclear region of cytoplasm. Colocalizes with trans-Golgi network membrane.

Recommended Dilutions

WB 1:500 - 1:1000

ELISA Recommended starting concentration is 1 µg/mL. Please optimize the concentration based on your specific assay requirements.

Immunogen Information

Gene ID

4430

Swiss Prot

O43795

Immunogen

Recombinant protein (or fragment). This information is considered to be commercially sensitive.

Synonyms

MMIa; myr1; MYH-1c; MMI-alpha; MYO1B

Contact

☎ | 400-999-6126

✉ | cn.market@abclonal.com.cn

🌐 | www.abclonal.com.cn

Product Information

Source

Rabbit

Isotype

IgG

Purification

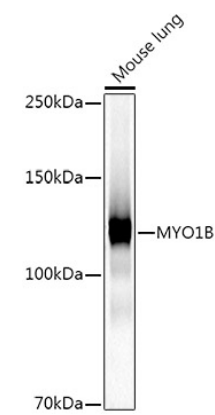
Affinity purification

Storage

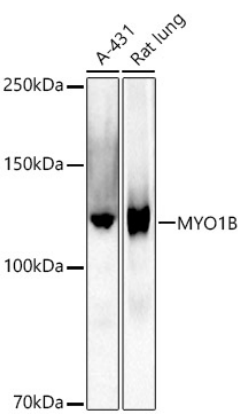
Store at -20°C. Avoid freeze / thaw cycles.

Buffer: PBS containing 50% glycerol and 0.05% BSA, preserved with proclin300 or sodium azide (as specified on the Certificate of Analysis), pH 7.3.

Validation Data



Western blot analysis of lysates from Mouse lung, using MYO1B Rabbit mAb (A21113) at 1:1000 dilution.
Secondary antibody: HRP-conjugated Goat anti-Rabbit IgG (H+L) (AS014) at 1:10000 dilution.
Lysates/proteins: 25µg per lane.
Blocking buffer: 3% nonfat dry milk in TBST.
Detection: ECL Basic Kit (RM00020).
Exposure time: 30s.



Western blot analysis of various lysates using MYO1B Rabbit mAb (A21113) at 1:1000 dilution.
Secondary antibody: HRP-conjugated Goat anti-Rabbit IgG (H+L) (AS014) at 1:10000 dilution.
Lysates/proteins: 25µg per lane.
Blocking buffer: 3% nonfat dry milk in TBST.
Detection: ECL Basic Kit (RM00020).
Exposure time: 180s.