

# PPP4C Rabbit pAb

Catalog No.: A2109

## Basic Information

### Observed MW

36kDa

### Calculated MW

35kDa

### Category

Primary antibody

### Applications

WB, IHC-P, IP, ELISA

### Cross-Reactivity

Human, Mouse, Rat

## Background

Enables protein serine/threonine phosphatase activity. Involved in regulation of double-strand break repair via homologous recombination. Located in cytosol; nucleoplasm; and plasma membrane.

## Recommended Dilutions

**WB** 1:500 - 1:2000

**IHC-P** 1:50 - 1:200

**IP** 0.5µg-4µg antibody for  
200µg-400µg extracts of  
whole cells

**ELISA** Recommended starting  
concentration is 1 µg/mL.  
Please optimize the  
concentration based on  
your specific assay  
requirements.

## Contact

 | 400-999-6126

 | [cn.market@abclonal.com.cn](mailto:cn.market@abclonal.com.cn)

 | [www.abclonal.com.cn](http://www.abclonal.com.cn)

## Immunogen Information

### Gene ID

5531

### Swiss Prot

P60510

### Immunogen

Recombinant fusion protein containing a sequence corresponding to amino acids 1-307 of human PPP4C (NP\_002711.1).

### Synonyms

PP4; PPX; PP-X; PP4C; PPH3; PPP4; PPP4C

## Product Information

### Source

Rabbit

### Isotype

IgG

### Purification

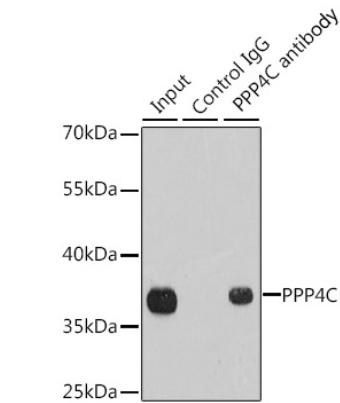
Affinity purification

### Storage

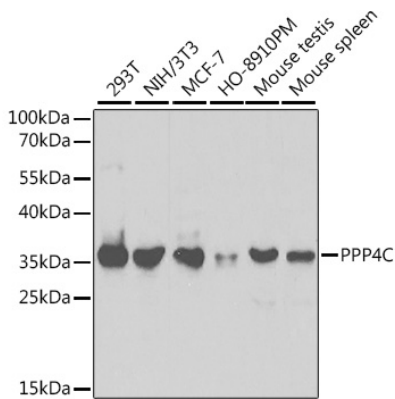
Store at -20°C. Avoid freeze / thaw cycles.

Buffer: PBS with 0.02% sodium azide, 50% glycerol, pH7.3.

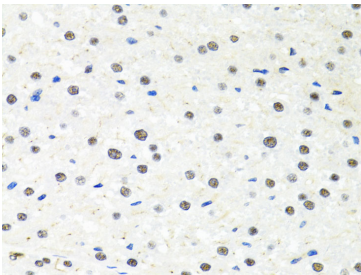
Validation Data



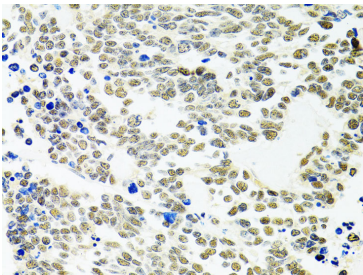
Immunoprecipitation analysis of 200 µg extracts of 293T cells using 1 µg PPP4C antibody (A2109). Western blot was performed from the immunoprecipitate using PPP4C antibody (A2109) at a dilution of 1:1000.



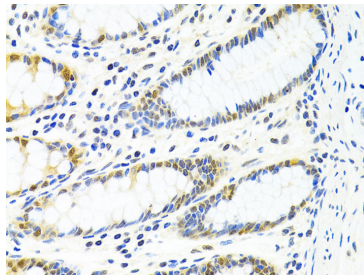
Western blot analysis of various lysates using PPP4C Rabbit pAb (A2109) at 1:1000 dilution. Secondary antibody: HRP-conjugated Goat anti-Rabbit IgG (H+L) (AS014) at 1:10000 dilution. Lysates/proteins: 25µg per lane. Blocking buffer: 3% nonfat dry milk in TBST.



Immunohistochemistry analysis of paraffin-embedded Rat liver using PPP4C Rabbit pAb (A2109) at dilution of 1:100 (40x lens). Microwave antigen retrieval performed with 0.01M PBS Buffer (pH 7.2) prior to IHC staining.



Immunohistochemistry analysis of paraffin-embedded Human lung cancer using PPP4C Rabbit pAb (A2109) at dilution of 1:100 (40x lens). Microwave antigen retrieval performed with 0.01M PBS Buffer (pH 7.2) prior to IHC staining.



Immunohistochemistry analysis of paraffin-embedded Human colon using PPP4C Rabbit pAb (A2109) at dilution of 1:100 (40x lens). Microwave antigen retrieval performed with 0.01M PBS Buffer (pH 7.2) prior to IHC staining.