

# Caspase-1 Rat mAb

Catalog No.: A21085 **4 Publications**

## Basic Information

### Observed MW

48kDa

### Calculated MW

46kDa

### Category

Primary antibody

### Applications

WB, ELISA

### Cross-Reactivity

Mouse

### CloneNo number

ATC0001

## Background

Enables cysteine-type endopeptidase activity. Involved in several processes, including positive regulation of I-kappaB kinase/NF-kappaB signaling; positive regulation of interleukin-1 beta production; and protein autoprocessing. Acts upstream of or within several processes, including membrane hyperpolarization; mitochondrial depolarization; and positive regulation of interleukin-1 alpha production. Located in extracellular region. Part of IPAF inflammasome complex. Is expressed in knee joint and metanephros. Orthologous to human CASP1 (caspase 1).

## Recommended Dilutions

**WB** 1:1000 - 1:3000

**ELISA** Recommended starting concentration is 1 µg/mL. Please optimize the concentration based on your specific assay requirements.

## Immunogen Information

### Gene ID

12362

### Swiss Prot

P29452

### Immunogen

Recombinant protein (or fragment). This information is considered to be commercially sensitive.

### Synonyms

ICE; I11bc

## Contact

☎ | 400-999-6126

✉ | [cn.market@abclonal.com.cn](mailto:cn.market@abclonal.com.cn)

🌐 | [www.abclonal.com.cn](http://www.abclonal.com.cn)

## Product Information

### Source

Rat

### Isotype

IgG

### Purification

Affinity purification

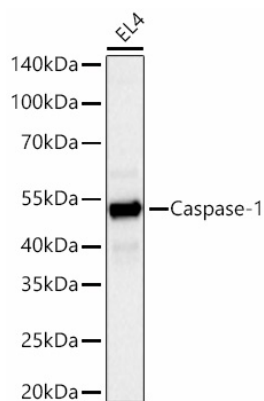
### Storage

Store at -20°C. Avoid freeze / thaw cycles.

Buffer: PBS containing 50% glycerol, preserved with proclin300 or sodium azide (as specified on the Certificate of Analysis), pH 7.3.

## Validation Data

---



Western blot analysis of lysates from EL4 cells using Caspase-1 Rat mAb (A21085) at 1:1000 dilution incubated overnight at 4°C.

Secondary antibody: HRP-conjugated Goat anti-Rat IgG (H+L) (AS028) at 1:10000 dilution.

Lysates/proteins: 25 µg per lane.

Blocking buffer: 3% nonfat dry milk in TBST.

Detection: ECL Basic Kit (RM00020).

Exposure time: 45s.