

STOP1 Rabbit pAb

Catalog No.: A21044

1 Publications

Basic Information

Observed MW

55kDa

Calculated MW

55kDa

Category

Primary antibody

Applications

WB, ELISA

Cross-Reactivity

Arabidopsis thaliana

Background

Encodes a putative nuclear Cys(2)His(2)-type zinc finger protein involved in H⁺ and Al³⁺ rhizotoxicity. In mutants exposed to aluminum stress, there is no induction of AtALMT1, an malate transporter known to be involved in the mediation of aluminum toxicity. Cell wall of the mutant is unstable in low pH medium (pH 4.5) in low Ca solution. This would mediate Ca-alleviation of low pH stress through pectin-Ca interaction.

Recommended Dilutions

WB 1:100 - 1:500

ELISA Recommended starting concentration is 1 µg/mL. Please optimize the concentration based on your specific assay requirements.

Immunogen Information

Gene ID

840339

Swiss Prot

Q9C8N5

Immunogen

Recombinant fusion protein containing a sequence corresponding to amino acids 55-180 of arabidopsis thaliana STOP1 (NP_174697.1).

Synonyms

AtSTOP1; F7P12.7; F7P12_7; sensitive to proton rhizotoxicity 1; STOP1

Contact

☎ | 400-999-6126

✉ | cn.market@abclonal.com.cn

🌐 | www.abclonal.com.cn

Product Information

Source

Rabbit

Isotype

IgG

Purification

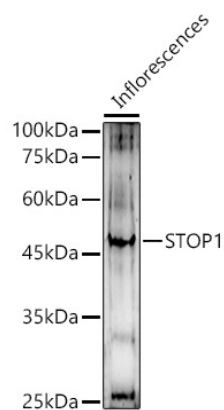
Affinity purification

Storage

Store at -20°C. Avoid freeze / thaw cycles.

Buffer: PBS with 0.05% proclin300, 50% glycerol, pH7.3.

Validation Data



Western blot analysis of lysates from Inflorescences, using STOP1 Rabbit pAb (A21044) at 1:500 dilution.
Secondary antibody: HRP-conjugated Goat anti-Rabbit IgG (H+L) (AS014) at 1:10000 dilution.
Lysates/proteins: 25µg per lane.
Blocking buffer: 3% nonfat dry milk in TBST.
Detection: ECL Enhanced Kit (RM00021).
Exposure time: 180s.