

# PDGFR alpha Rabbit pAb

Catalog No.: A2103

5 Publications

## Basic Information

**Observed MW**

150-190kDa

**Calculated MW**

123kDa

**Category**

Primary antibody

**Applications**

WB, IHC-P, IF/ICC, ELISA

**Cross-Reactivity**

Human, Mouse, Rat

## Background

This gene encodes a cell surface tyrosine kinase receptor for members of the platelet-derived growth factor family. These growth factors are mitogens for cells of mesenchymal origin. The identity of the growth factor bound to a receptor monomer determines whether the functional receptor is a homodimer or a heterodimer, composed of both platelet-derived growth factor receptor alpha and beta polypeptides. Studies suggest that this gene plays a role in organ development, wound healing, and tumor progression. Mutations in this gene have been associated with idiopathic hypereosinophilic syndrome, somatic and familial gastrointestinal stromal tumors, and a variety of other cancers.

## Recommended Dilutions

**WB** 1:500 - 1:1000**IHC-P** 1:50 - 1:200**IF/ICC** 1:50 - 1:200

**ELISA** Recommended starting concentration is 1 µg/mL. Please optimize the concentration based on your specific assay requirements.

## Immunogen Information

**Gene ID**

5156

**Swiss Prot**

P16234

**Immunogen**

Recombinant fusion protein containing a sequence corresponding to amino acids 896-1059 of human PDGFR alpha (NP\_006197.1).

**Synonyms**

CD140A; PDGFR2; PDGFR-2; PDGFR alpha

## Contact

 | 400-999-6126 | [cn.market@abclonal.com.cn](mailto:cn.market@abclonal.com.cn) | [www.abclonal.com.cn](http://www.abclonal.com.cn)

## Product Information

**Source**

Rabbit

**Isotype**

IgG

**Purification**

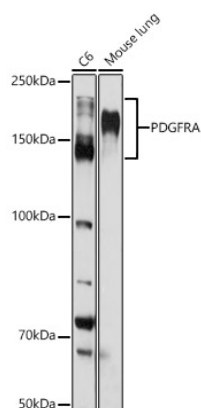
Affinity purification

**Storage**

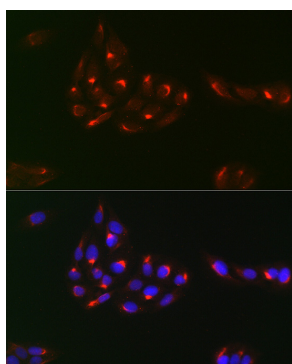
Store at -20°C. Avoid freeze / thaw cycles.

Buffer: PBS with 0.02% sodium azide, 50% glycerol, pH7.3.

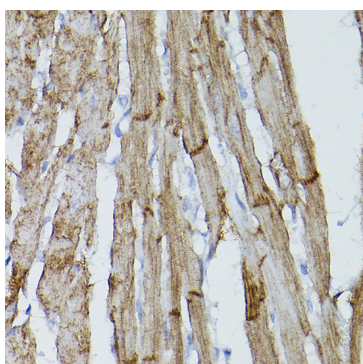
## Validation Data



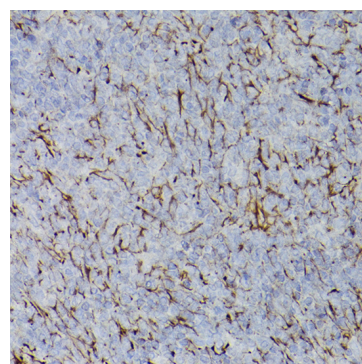
Western blot analysis of various lysates using PDGFR alpha Rabbit pAb (A2103) at 1:1000 dilution. Secondary antibody: HRP-conjugated Goat anti-Rabbit IgG (H+L) (AS014) at 1:10000 dilution. Lysates/proteins: 25µg per lane. Blocking buffer: 3% nonfat dry milk in TBST. Detection: ECL Basic Kit (RM00020). Exposure time: 30s.



Immunofluorescence analysis of U2OS cells using PDGFR alpha Rabbit pAb (A2103) at dilution of 1:100 (40x lens). Secondary antibody: Cy3-conjugated Goat anti-Rabbit IgG (H+L) (AS007) at 1:500 dilution. Blue: DAPI for nuclear staining.



Immunohistochemistry analysis of paraffin-embedded Mouse heart using PDGFR alpha Rabbit pAb (A2103) at dilution of 1:50 (40x lens). High pressure antigen retrieval performed with 0.01M Citrate Bufferr (pH 6.0) prior to IHC staining.



Immunohistochemistry analysis of paraffin-embedded Rat spleen using PDGFR alpha Rabbit pAb (A2103) at dilution of 1:50 (40x lens). High pressure antigen retrieval performed with 0.01M Citrate Bufferr (pH 6.0) prior to IHC staining.