

GNAI2 Rabbit mAb

Catalog No.: A20930 **Recombinant**

Basic Information

Observed MW

40 kDa

Calculated MW

40kDa

Category

Primary antibody

Applications

WB,IHC-P,ELISA

Cross-Reactivity

Human, Rat

CloneNo number

ARC2911

Background

The protein encoded by this gene is an alpha subunit of guanine nucleotide binding proteins (G proteins). The encoded protein contains the guanine nucleotide binding site and is involved in the hormonal regulation of adenylate cyclase. Several transcript variants encoding different isoforms have been found for this gene.

Recommended Dilutions

WB 1:1000 - 1:4000

IHC-P 1:50 - 1:200

ELISA Recommended starting concentration is 1 µg/mL. Please optimize the concentration based on your specific assay requirements.

Immunogen Information

Gene ID

2771

Swiss Prot

P04899

Immunogen

Synthetic peptide. This information is considered to be commercially sensitive.

Synonyms

GIP; HG1C; GNAI2B; H_LUCA15.1; H_LUCA16.1; GNAI2

Contact

☎ | 400-999-6126

✉ | cn.market@abclonal.com.cn

🌐 | www.abclonal.com.cn

Product Information

Source

Rabbit

Isotype

IgG

Purification

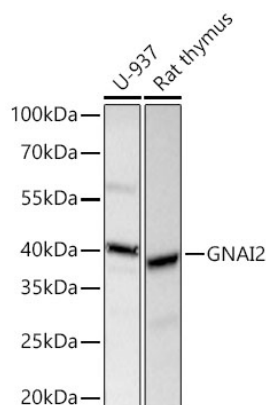
Affinity purification

Storage

Store at -20°C. Avoid freeze / thaw cycles.

Buffer: PBS with 0.02% sodium azide,0.05% BSA,50% glycerol,pH7.3.

Validation Data



Western blot analysis of various lysates using GNAI2 Rabbit mAb (A20930) at 1:1000 dilution incubated at room temperature for 1.5 hours.

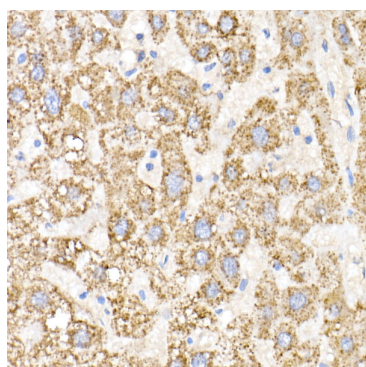
Secondary antibody: HRP-conjugated Goat anti-Rabbit IgG (H+L) (AS014) at 1:10000 dilution.

Lysates/proteins: 25 µg per lane.

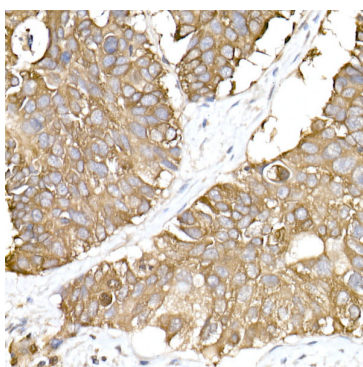
Blocking buffer: 3% nonfat dry milk in TBST.

Detection: ECL Basic Kit (RM00020).

Exposure time: 10s.



Immunohistochemistry analysis of paraffin-embedded Human liver using GNAI2 Rabbit mAb (A20930) at dilution of 1:20 (40x lens). High pressure antigen retrieval performed with 0.01M Citrate buffer (pH 6.0) prior to IHC staining.



Immunohistochemistry analysis of paraffin-embedded Human lung cancer using GNAI2 Rabbit mAb (A20930) at dilution of 1:20 (40x lens). High pressure antigen retrieval performed with 0.01M Citrate buffer (pH 6.0) prior to IHC staining.