

# SPINK5 / LEKTI Rabbit mAb

Catalog No.: A20916 **Recombinant**

## Basic Information

### Observed MW

37kDa/65kDa/145kDa

### Calculated MW

121kDa

### Category

Primary antibody

### Applications

WB, ELISA

### Cross-Reactivity

Human, Mouse, Rat

### CloneNo number

ARC2888

## Background

This gene encodes a multidomain serine protease inhibitor that contains 15 potential inhibitory domains. The encoded preproprotein is proteolytically processed to generate multiple protein products, which may exhibit unique activities and specificities. These proteins may play a role in skin and hair morphogenesis, as well as anti-inflammatory and antimicrobial protection of mucous epithelia. Mutations in this gene may result in Netherton syndrome, a disorder characterized by ichthyosis, defective cornification, and atopy. This gene is present in a gene cluster on chromosome 5. Alternative splicing results in multiple transcript variants.

## Recommended Dilutions

**WB** 1:500 - 1:1000

**ELISA** Recommended starting concentration is 1 µg/mL. Please optimize the concentration based on your specific assay requirements.

## Immunogen Information

### Gene ID

11005

### Swiss Prot

Q9NQ38

### Immunogen

Synthetic peptide. This information is considered to be commercially sensitive.

### Synonyms

NS; NETS; LEKTI; LETKI; VAKTI; SPINK5 / LEKTI

## Contact

☎ | 400-999-6126

✉ | [cn.market@abclonal.com.cn](mailto:cn.market@abclonal.com.cn)

🌐 | [www.abclonal.com.cn](http://www.abclonal.com.cn)

## Product Information

### Source

Rabbit

### Isotype

IgG

### Purification

Affinity purification

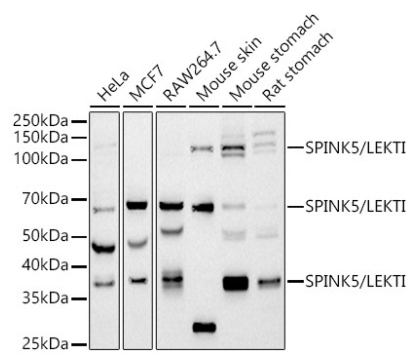
### Storage

Store at -20°C. Avoid freeze / thaw cycles.

Buffer: PBS containing 50% glycerol and 0.05% BSA, preserved with proclin300 or sodium azide (as specified on the Certificate of Analysis), pH 7.3.

## Validation Data

---



Western blot analysis of various lysates using SPINK5 / LEKTI Rabbit mAb (A20916) at 1:1000 dilution.  
Secondary antibody: HRP-conjugated Goat anti-Rabbit IgG (H+L) (AS014) at 1:10000 dilution.  
Lysates/proteins: 25µg per lane.  
Blocking buffer: 3% nonfat dry milk in TBST.  
Detection: ECL Basic Kit (RM00020).  
Exposure time: 90s.