

Pleckstrin Rabbit mAb

Catalog No.: A20905 **Recombinant**

Basic Information

Observed MW

40 kDa

Calculated MW

40 kDa

Category

Primary antibody

Applications

WB, ELISA

Cross-Reactivity

Human

CloneNo number

ARC2870

Background

Enables phosphatidylinositol-3,4-bisphosphate binding activity; protein homodimerization activity; and protein kinase C binding activity. Involved in several processes, including G protein-coupled receptor signaling pathway; actin cytoskeleton organization; and positive regulation of supramolecular fiber organization. Located in cytoplasm and ruffle membrane.

Recommended Dilutions

WB 1:100 - 1:500

ELISA Recommended starting concentration is 1 µg/mL. Please optimize the concentration based on your specific assay requirements.

Immunogen Information

Gene ID

5341

Swiss Prot

P08567

Immunogen

Synthetic peptide. This information is considered to be commercially sensitive.

Synonyms

P47; PLEK1; Pleckstrin

Contact

 | 400-999-6126

 | cn.market@abclonal.com.cn

 | www.abclonal.com.cn

Product Information

Source

Rabbit

Isotype

IgG

Purification

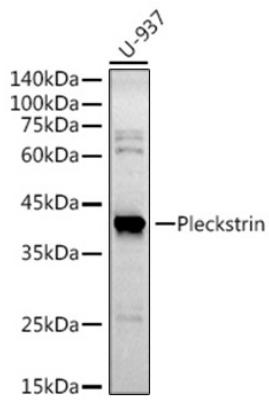
Affinity purification

Storage

Store at -20°C. Avoid freeze / thaw cycles.

Buffer: PBS containing 50% glycerol and 0.05% BSA, preserved with proclin300 or sodium azide (as specified on the Certificate of Analysis), pH 7.3.

Validation Data



Western blot analysis of various lysates using Pleckstrin Rabbit mAb (A20905) at 1:500 dilution.
Secondary antibody: HRP-conjugated Goat anti-Rabbit IgG (H+L) (AS014) at 1:10000 dilution.
Lysates/proteins: 25µg per lane.
Blocking buffer: 3% nonfat dry milk in TBST.
Detection: ECL Basic Kit (RM00020).
Exposure time: 180s.