

ICAM2 / CD102 Rabbit mAb

Catalog No.: A20870 **Recombinant**

Basic Information

Observed MW

45kDa/55kDa

Calculated MW

31kDa

Category

Primary antibody

Applications

WB, ELISA

Cross-Reactivity

Mouse, Rat

CloneNo number

ARC2802

Background

Predicted to enable integrin binding activity. Predicted to be involved in cell adhesion. Located in microvillus; plasma membrane; and uropod. Is integral component of plasma membrane. Is expressed in central nervous system; extraembryonic component; female reproductive system; retina; and vascular element. Orthologous to human ICAM2 (intercellular adhesion molecule 2).

Recommended Dilutions

WB 1:500 - 1:1000

ELISA Recommended starting concentration is 1 µg/mL. Please optimize the concentration based on your specific assay requirements.

Immunogen Information

Gene ID

15896

Swiss Prot

P35330

Immunogen

Recombinant protein (or fragment). This information is considered to be commercially sensitive.

Synonyms

CD102; Ly-60; Icam-2; ICAM2 / CD102

Contact

☎ | 400-999-6126

✉ | cn.market@abclonal.com.cn

🌐 | www.abclonal.com.cn

Product Information

Source

Rabbit

Isotype

IgG

Purification

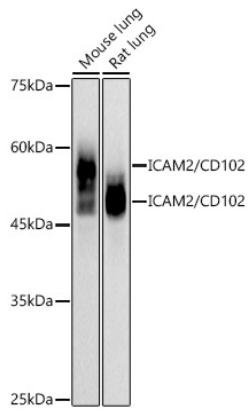
Affinity purification

Storage

Store at -20°C. Avoid freeze / thaw cycles.

Buffer: PBS containing 50% glycerol and 0.05% BSA, preserved with proclin300 or sodium azide (as specified on the Certificate of Analysis), pH 7.3.

Validation Data



Western blot analysis of various lysates using ICAM2 / CD102 Rabbit mAb (A20870) at 1:1000 dilution.
Secondary antibody: HRP-conjugated Goat anti-Rabbit IgG (H+L) (AS014) at 1:10000 dilution.
Lysates/proteins: 25µg per lane.
Blocking buffer: 3% nonfat dry milk in TBST.
Detection: ECL Basic Kit (RM00020).
Exposure time: 30s.