

[KO Validated] SLC25A4/ANT1 Rabbit mAb

Catalog No.: A20842

KO Validated

Recombinant

2 Publications

Basic Information

Observed MW

33kDa

Calculated MW

33kDa

Category

Primary antibody

Applications

WB, IHC-P, IF/ICC, IP, ELISA

Cross-Reactivity

Human, Mouse, Rat

CloneNo number

ARC51442

Background

This gene is a member of the mitochondrial carrier subfamily of solute carrier protein genes. The product of this gene functions as a gated pore that translocates ADP from the cytoplasm into the mitochondrial matrix and ATP from the mitochondrial matrix into the cytoplasm. The protein forms a homodimer embedded in the inner mitochondria membrane. Mutations in this gene have been shown to result in autosomal dominant progressive external ophthalmoplegia and familial hypertrophic cardiomyopathy.

Recommended Dilutions

WB 1:1000 - 1:2000**IHC-P** 1:3000 - 1:12000**IF/ICC** 1:100 - 1:1000**IP** 0.5µg-4µg antibody for
200µg-400µg extracts of
whole cells**ELISA** Recommended starting
concentration is 1 µg/mL.
Please optimize the
concentration based on
your specific assay
requirements.

Immunogen Information

Gene ID

291

Swiss Prot

P12235

Immunogen

Synthetic peptide. This information is considered to be commercially sensitive.

Synonyms

T1; ANT; AAC1; ANT1; PEO2; PEO3; ANT 1; PEOA2; MTDPS12; MTDPS12A

Product Information

Source

Rabbit

Isotype

IgG

Purification

Affinity purification

Storage

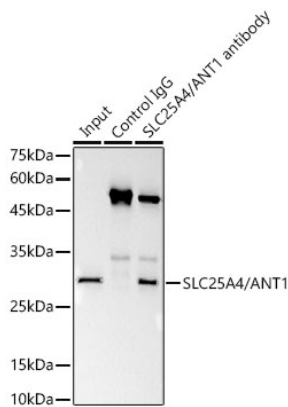
Store at -20°C. Avoid freeze / thaw cycles.

Buffer: PBS containing 50% glycerol and 0.05% BSA, preserved with proclin300 or sodium azide (as specified on the Certificate of Analysis), pH 7.3.

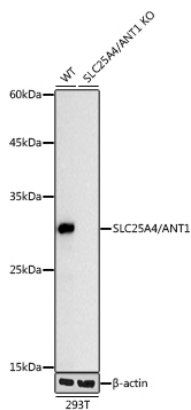
Contact

 | 400-999-6126 | cn.market@abclonal.com.cn | www.abclonal.com.cn

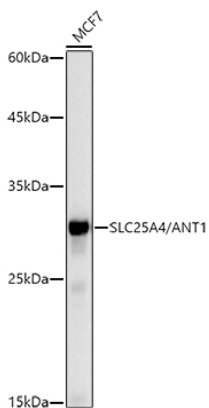
Validation Data



Immunoprecipitation analysis of 300 µg extracts of 293T cells using 3 µg SLC25A4/ANT1 antibody (A20842). Western blot was performed from the immunoprecipitate using SLC25A4/ANT1 antibody (A20842) at a dilution of 1:1000.

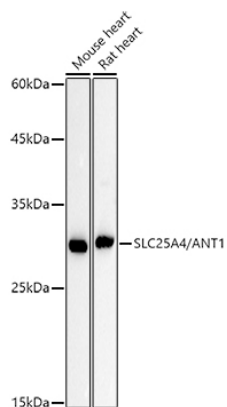


Western blot analysis of lysates from wild type (WT) and SLC25A4/ANT1 knockout (KO) 293T cells, using [KO Validated] SLC25A4/ANT1 Rabbit mAb (A20842) at 1:1000 dilution.
Secondary antibody: HRP-conjugated Goat anti-Rabbit IgG (H+L) (AS014) at 1:10000 dilution.
Lysates/proteins: 25µg per lane.
Blocking buffer: 3% nonfat dry milk in TBST.
Detection: ECL Basic Kit (RM00020).
Exposure time: 10s.



Western blot analysis of lysates from MCF7 cells, using [KO Validated] SLC25A4/ANT1 Rabbit mAb (A20842) at 1:1000 dilution.
Secondary antibody: HRP-conjugated Goat anti-Rabbit IgG (H+L) (AS014) at 1:10000 dilution.
Lysates/proteins: 25µg per lane.
Blocking buffer: 3% nonfat dry milk in TBST.
Detection: ECL Basic Kit (RM00020).
Exposure time: 10s.

Validation Data



Western blot analysis of various lysates using [KO Validated] SLC25A4/ANT1 Rabbit mAb (A20842) at 1:1000 dilution.

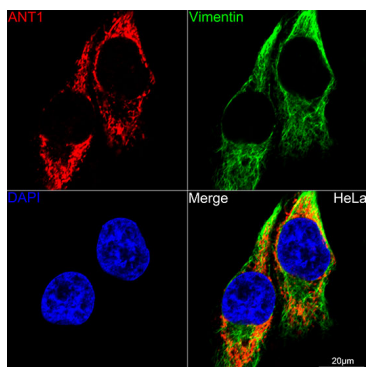
Secondary antibody: HRP-conjugated Goat anti-Rabbit IgG (H+L) (AS014) at 1:10000 dilution.

Lysates/proteins: 25µg per lane.

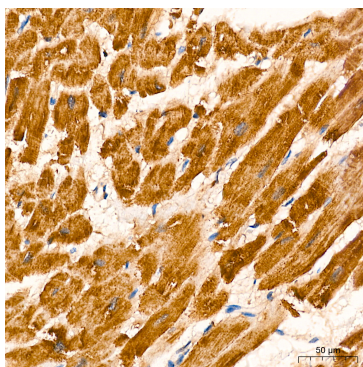
Blocking buffer: 3% nonfat dry milk in TBST.

Detection: ECL Basic Kit (RM00020).

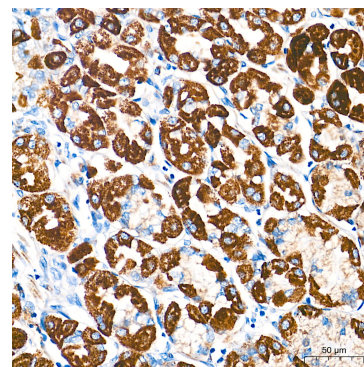
Exposure time: 60s.



Confocal imaging of HeLa cells using [KO Validated] SLC25A4/ANT1 Rabbit mAb (A20842, dilution 1:100) (Red). The cells were counterstained with [KO Validated] Vimentin Rabbit mAb (A19607, dilution 1:100) (Green). DAPI was used for nuclear staining (blue). Objective: 60x.



Immunohistochemistry analysis of paraffin-embedded Human heart tissue using [KO Validated] SLC25A4/ANT1 Rabbit mAb (A20842) at a dilution of 1:5000 (40x lens). High pressure antigen retrieval performed with 0.01M Tris-EDTA Buffer (pH 9.0) prior to IHC staining.



Immunohistochemistry analysis of paraffin-embedded Human stomach tissue using [KO Validated] SLC25A4/ANT1 Rabbit mAb (A20842) at a dilution of 1:5000 (40x lens). High pressure antigen retrieval performed with 0.01M Tris-EDTA Buffer (pH 9.0) prior to IHC staining.