

# [KO Validated] SIRT3 Rabbit mAb

Catalog No.: A20805

**KO Validated**

**Recombinant**

**10 Publications**

## Basic Information

### Observed MW

28kDa

### Calculated MW

44kDa

### Category

Primary antibody

### Applications

WB, IHC-P, IP, ELISA

### Cross-Reactivity

Human, Rat

### CloneNo number

ARC51526

## Background

SIRT3 encodes a member of the sirtuin family of class III histone deacetylases, homologs to the yeast Sir2 protein. The encoded protein is found exclusively in mitochondria, where it can eliminate reactive oxygen species, inhibit apoptosis, and prevent the formation of cancer cells. SIRT3 has far-reaching effects on nuclear gene expression, cancer, cardiovascular disease, neuroprotection, aging, and metabolic control.

## Recommended Dilutions

**WB** 1:1000 - 1:4000

**IHC-P** 1:500 - 1:2000

**IP** 0.5µg-4µg antibody for  
200µg-400µg extracts of  
whole cells

**ELISA** Recommended starting  
concentration is 1 µg/mL.  
Please optimize the  
concentration based on  
your specific assay  
requirements.

## Immunogen Information

### Gene ID

23410

### Swiss Prot

Q9NTG7

### Immunogen

Synthetic peptide. This information is considered to be commercially sensitive.

### Synonyms

SIR2L3; T3

## Contact

☎ | 400-999-6126

✉ | [cn.market@abclonal.com.cn](mailto:cn.market@abclonal.com.cn)

🌐 | [www.abclonal.com.cn](http://www.abclonal.com.cn)

## Product Information

### Source

Rabbit

### Isotype

IgG

### Purification

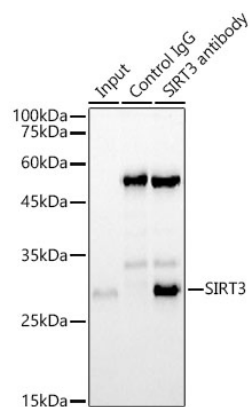
Affinity purification

### Storage

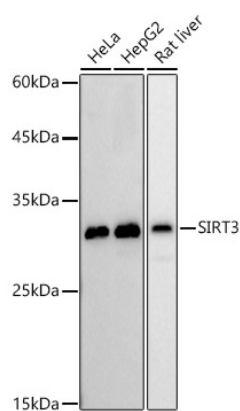
Store at -20°C. Avoid freeze / thaw cycles.

Buffer: PBS with 0.09% Sodium azide, 0.05% BSA, 50% glycerol, pH7.3.

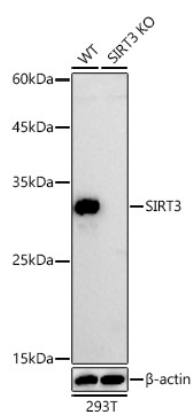
## Validation Data



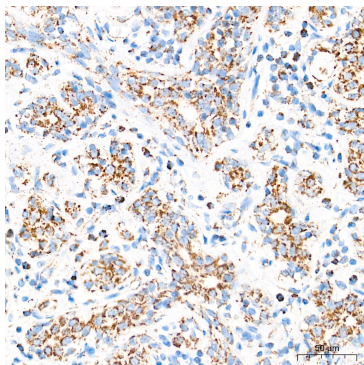
Immunoprecipitation analysis of 300ug extracts of HeLa cells using 3ug SIRT3 Rabbit mAb (A20805). Western blot was performed from the immunoprecipitate using SIRT3 Rabbit mAb (A20805) at a dilution of 1:1000.



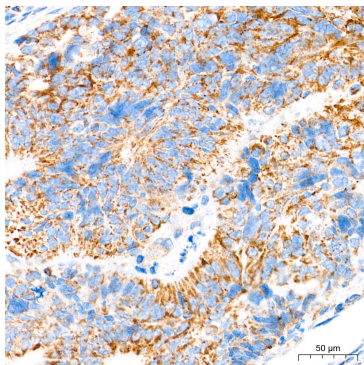
Western blot analysis of various lysates, using [KO Validated] SIRT3 Rabbit mAb (A20805) at 1:1000 dilution.  
 Secondary antibody: HRP-conjugated Goat anti-Rabbit IgG (H+L) (AS014) at 1:10000 dilution.  
 Lysates/proteins: 25µg per lane.  
 Blocking buffer: 3% nonfat dry milk in TBST.  
 Detection: ECL Basic Kit (RM00020).  
 Exposure time: 30s.



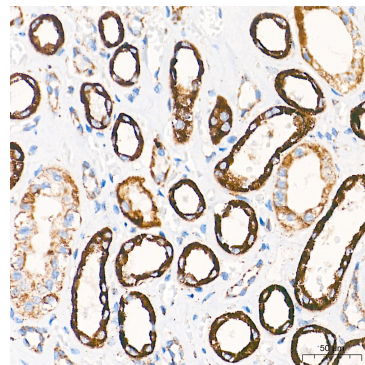
Western blot analysis of lysates from wild type (WT) and SIRT3 knockout (KO) 293T cells using [KO Validated] SIRT3 Rabbit mAb (A20805) at 1:1000 dilution incubated overnight at 4°C.  
 Secondary antibody: HRP-conjugated Goat anti-Rabbit IgG (H+L) (AS014) at 1:10000 dilution.  
 Lysates/proteins: 25 µg per lane.  
 Blocking buffer: 3% nonfat dry milk in TBST.  
 Detection: ECL Basic Kit (RM00020).  
 Exposure time: 30s.



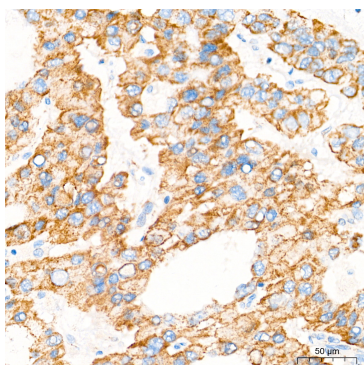
Immunohistochemistry analysis of paraffin-embedded Human breast cancer tissue using [KO Validated] SIRT3 Rabbit mAb (A20805) at a dilution of 1:2000 (40x lens). High pressure antigen retrieval performed with 0.01M Tris-EDTA Buffer (pH 9.0) prior to IHC staining.



Immunohistochemistry analysis of paraffin-embedded Human colon carcinoma tissue using [KO Validated] SIRT3 Rabbit mAb (A20805) at a dilution of 1:2000 (40x lens). High pressure antigen retrieval performed with 0.01M Tris-EDTA Buffer (pH 9.0) prior to IHC staining.



Immunohistochemistry analysis of paraffin-embedded Human kidney tissue using [KO Validated] SIRT3 Rabbit mAb (A20805) at a dilution of 1:2000 (40x lens). High pressure antigen retrieval performed with 0.01M Tris-EDTA Buffer (pH 9.0) prior to IHC staining.



Immunohistochemistry analysis of paraffin-embedded Human liver cancer tissue using [KO Validated] SIRT3 Rabbit mAb (A20805) at a dilution of 1:2000 (40x lens). High pressure antigen retrieval performed with 0.01M Tris-EDTA Buffer (pH 9.0) prior to IHC staining.