

Siglec-15 Rabbit mAb

Catalog No.: A20773 **Recombinant**

Basic Information

Observed MW

36kDa

Calculated MW

36kDa

Category

Primary antibody

Applications

WB, ELISA

Cross-Reactivity

Human, Mouse, Rat

CloneNo number

ARC50595

Background

Predicted to be involved in regulation of actin cytoskeleton organization; regulation of bone resorption; and regulation of osteoclast development. Predicted to be integral component of membrane. Predicted to be part of protein-containing complex. Predicted to be active in plasma membrane.

Recommended Dilutions

WB 1:500 - 1:1000

ELISA Recommended starting concentration is 1 µg/mL. Please optimize the concentration based on your specific assay requirements.

Immunogen Information

Gene ID

284266

Swiss Prot

Q6ZMC9

Immunogen

Recombinant protein (or fragment). This information is considered to be commercially sensitive.

Synonyms

CD33L3; HsT1361; SIGLEC-15; Siglec-15

Contact

☎ | 400-999-6126

✉ | cn.market@abclonal.com.cn

🌐 | www.abclonal.com.cn

Product Information

Source

Rabbit

Isotype

IgG

Purification

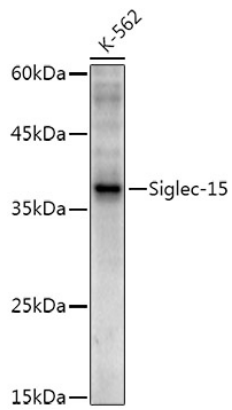
Affinity purification

Storage

Store at -20°C. Avoid freeze / thaw cycles.

Buffer: PBS containing 50% glycerol and 0.05% BSA, preserved with proclin300 or sodium azide (as specified on the Certificate of Analysis), pH 7.3.

Validation Data



Western blot analysis of lysates from K-562 cells, using Siglec-15 Rabbit mAb (A20773) at 1:1000 dilution.
Secondary antibody: HRP-conjugated Goat anti-Rabbit IgG (H+L) (AS014) at 1:10000 dilution.
Lysates/proteins: 25µg per lane.
Blocking buffer: 3% nonfat dry milk in TBST.
Detection: ECL Enhanced Kit (RM00021).
Exposure time: 180s.